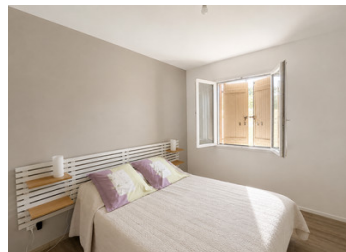


Marsac-sur-l'Isle – Single-story 4-bedroom family home with a double garage and large, fenced-in lot



INFORMATION

Town:	Marsac-sur-l'Isle
Department:	Dordogne
Bed:	4
Bath:	1
Floor:	107 m ²
Plot Size:	2030 m ²



IN BRIEF

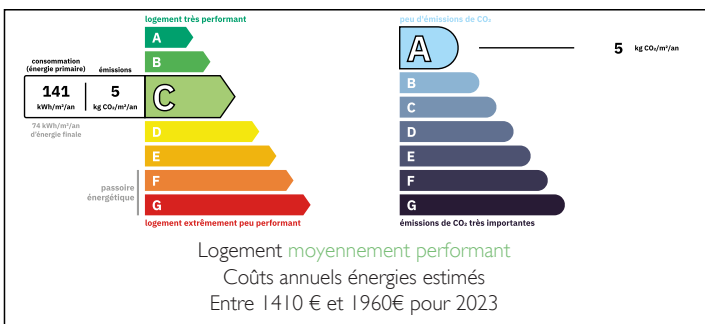
Marsac-sur-l'Isle - Single-story home featuring: 1 fully equipped kitchen open to a living/dining room, 1 pantry, 4 bedrooms, 1 bathroom, 1 half-bath, 1 double garage, 1 terrace, and 1 garden shed.

Just a few minutes from Périgueux, in a sought-after area of Marsac-sur-l'Isle, discover this pleasant single-story home offering comfort, functionality, and immediate proximity to all amenities.

Highlights of this home:

- Single-story home
- Fully equipped kitchen
- Pantry connecting to the garage and kitchen
- Double garage with laundry area
- Large patio
- Double-glazed windows
- Fully enclosed property with an electric gate
- Screen doors on all windows
- Close to all amenities

ENERGY - DPE



NB. Quoted prices relate to euro transactions. Fluctuations in exchange rates are not the responsibility of the agency or those representing it. The agency and its representatives are not authorised to make or give guarantees relating to the property. These particulars do not form part of any contract but are to be taken as a general representation of the property. Any areas, measurements or distances are approximate. Text, photographs and plans, where applicable, are for guidance only. Leggett and its representatives have not tested services, equipment or facilities and cannot guarantee the same.

Particulars for off-plan purchases are intended as a guide only. Final finishes to the property may vary. Purchasers are advised to engage a solicitor to check the plans and specifications as laid out in their purchase contract with the developer.



DESCRIPTION

null

Information about risks to which this property is exposed is available on the Géorisques website : <https://www.georisques.gouv.fr>

NOTES