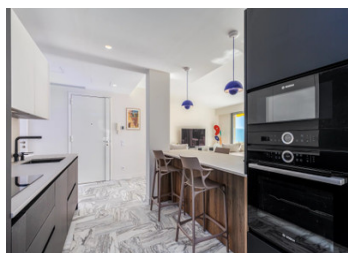
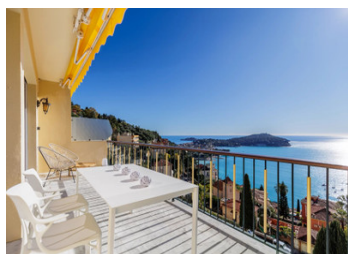
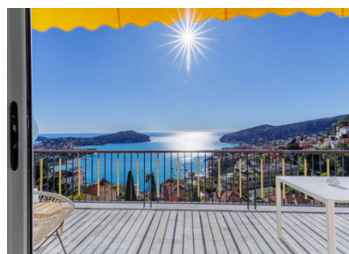


3 room apartment, 86 m , 4th floor, 24 m terrace, 2 beds, 2 shower rooms, 3 visitor parking spaces, cellar.

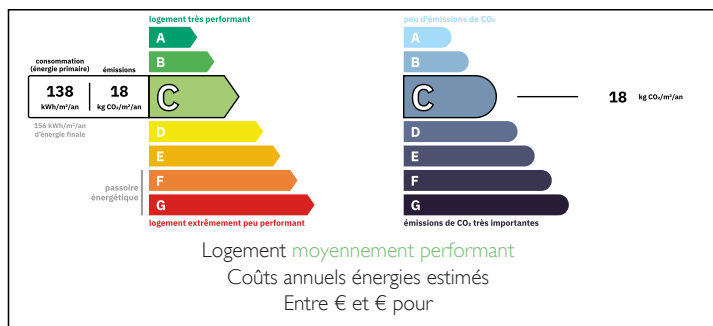


INFORMATION

Town:	Villefranche-sur-Mer
Department:	Alpes-Maritimes
Bed:	2
Bath:	2
Floor:	86 m ²
Outside Space:	24 m ²



ENERGY - DPE



IN BRIEF

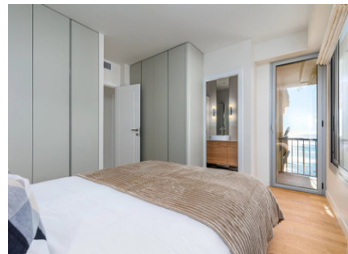
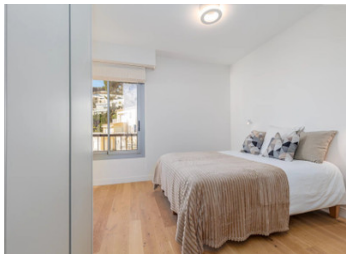
Ideally situated with optimal sun exposure, harmonious proportions, and exceptional natural light with a panoramic view of Villefranche bay.

Visitor parking for three vehicles is available right outside the building, with easy street parking also an option.

A large cellar completes this exceptional property.

NB. Quoted prices relate to euro transactions. Fluctuations in exchange rates are not the responsibility of the agency or those representing it. The agency and its representatives are not authorised to make or give guarantees relating to the property. These particulars do not form part of any contract but are to be taken as a general representation of the property. Any areas, measurements or distances are approximate. Text, photographs and plans, where applicable, are for guidance only. Leggett and its representatives have not tested services, equipment or facilities and cannot guarantee the same.

Particulars for off-plan purchases are intended as a guide only. Final finishes to the property may vary. Purchasers are advised to engage a solicitor to check the plans and specifications as laid out in their purchase contract with the developer.



DESCRIPTION

We offer a truly rare property, perched above the Lower Corniche and facing one of the world's most beautiful bays.

The spectacle is striking from the moment you enter: an absolutely breathtaking panoramic view.

This 86 m² three-room apartment, fully renovated by an architect, has been meticulously designed featuring high-end materials and timeless contemporary elegance.

The light-filled living area opens onto a spacious terrace suspended above the bay, offering an exceptional panorama from sunrise to sunset.

The fully equipped, custom-made kitchen combines aesthetics with functionality.

The sleeping area features two lovely bedrooms, each with its own en-suite shower room, creating an atmosphere that is both refined and soothing.

LOCAL TAXES

Taxe foncière: 1780 EUR

Information about risks to which this property is exposed is available on the Géorisques website : <https://www.georisques.gouv.fr>

NOTES