

Charming stone built property with outbuildings on 3 hectares of land, situated in the heights of Hautefort.



INFORMATION

Town:	Hautefort
Department:	Dordogne
Bed:	2
Bath:	1
Floor:	115 m2
Plot Size:	29697 m2



IN BRIEF

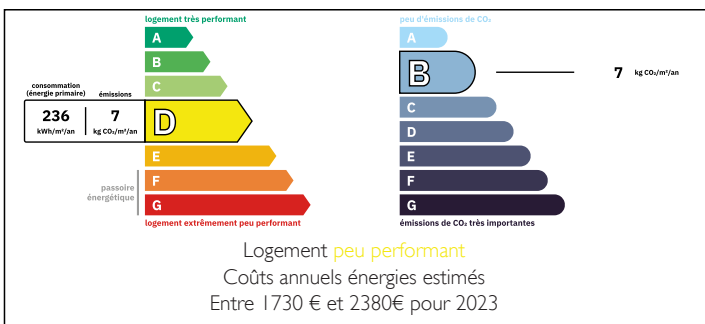
Exceptional spot for this beautiful stone house, situated in the heights of Hautefort, a medieval village known for its wonderful castle.

The house is surrounded by 3 hectares and outbuildings.

Heat pump and wood central heating, individual septic tank.

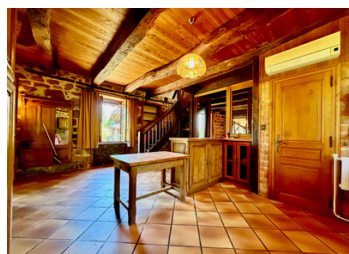
Great potential for horses or other.

ENERGY - DPE



NB. Quoted prices relate to euro transactions. Fluctuations in exchange rates are not the responsibility of the agency or those representing it. The agency and its representatives are not authorised to make or give guarantees relating to the property. These particulars do not form part of any contract but are to be taken as a general representation of the property. Any areas, measurements or distances are approximate. Text, photographs and plans, where applicable, are for guidance only. Leggett and its representatives have not tested services, equipment or facilities and cannot guarantee the same.

Particulars for off-plan purchases are intended as a guide only. Final finishes to the property may vary. Purchasers are advised to engage a solicitor to check the plans and specifications as laid out in their purchase contract with the developer.



DESCRIPTION

The main house offers around 115m² of living space, composed of an entrance opening onto a veranda/dining room, fitted kitchen, lounge with fireplace and also a WC.

First floor:

Two bedrooms with exposed woodwork, wardrobe, bathroom and toilet.

Independent garage which could be transformed into more living space, a cellar, and an outbuilding.

Information about risks to which this property is exposed is available on the Géorisques website : <https://www.georisques.gouv.fr>

NOTES