

Exceptional Chalet for sale in les Deux Alpes - Venosc area - 5 bedrooms



INFORMATION

Town:	Les Deux Alpes
Department:	Isère
Bed:	5
Bath:	6
Floor:	236 m ²
Plot Size:	53 m ²



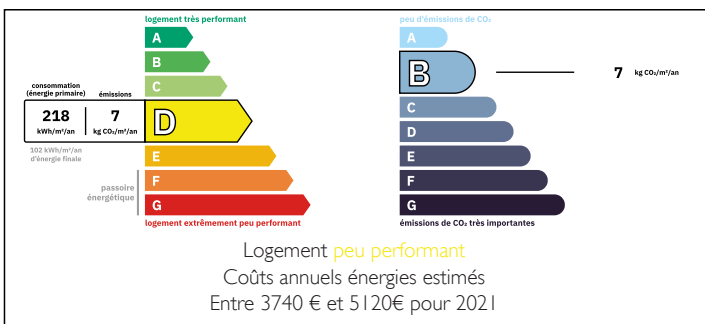
IN BRIEF

Magnificent character chalet located in Les Deux Alpes, in the sought-after Venosc area. It showcases high-quality materials, refined finishes, and tastefully designed interiors.

Situated in one of the most desirable areas of Les Deux Alpes, this chalet offers easy access to the resort's shops, restaurants, and amenities, as well as the Diable chairlift, providing quick access to the extensive ski domain.

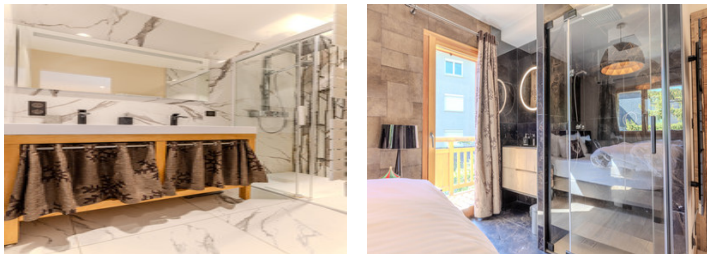
Renowned for its glacier rising to over 3,400 metres above sea level, Les Deux Alpes is one of the most vibrant resorts in the French Alps. It boasts an exceptional ski area and a wide range of activities throughout the year, including skiing, mountain biking, hiking, golf, sledging, entertainment, and sporting events. Its friendly atmosphere and year-round appeal make it a highly sought-after destination.

ENERGY - DPE



NB. Quoted prices relate to euro transactions. Fluctuations in exchange rates are not the responsibility of the agency or those representing it. The agency and its representatives are not authorised to make or give guarantees relating to the property. These particulars do not form part of any contract but are to be taken as a general representation of the property. Any areas, measurements or distances are approximate. Text, photographs and plans, where applicable, are for guidance only. Leggett and its representatives have not tested services, equipment or facilities and cannot guarantee the same.

Particulars for off-plan purchases are intended as a guide only. Final finishes to the property may vary. Purchasers are advised to engage a solicitor to check the plans and specifications as laid out in their purchase contract with the developer.



DESCRIPTION

Located in one of the most sought-after areas of Les Deux Alpes, this exceptional 236 m² chalet combines Alpine elegance, impressive volumes and premium-quality finishes.

Upon entering, a spacious reception hall provides access to the various areas of the chalet. On this level, you will find a large garage, a ski room, and a superb wellness area featuring a sauna, whirlpool bath, exercise bike and separate WC, offering the perfect place to unwind after a day in the mountains.

The main living area is particularly impressive, boasting exceptional proportions and stunning cathedral-style ceilings. It comprises a fully equipped kitchen opening onto a magnificent living room flooded with natural light through large floor-to-ceiling windows. A wood-burning stove enhances the warm and inviting atmosphere, while direct access leads to a spacious terrace.

Finished with high-quality materials and attention to detail throughout, the chalet offers five comfortable bedrooms and six bathrooms, ensuring privacy and comfort for family and guests alike.

Outside, a beautiful south-east facing terrace with a jacuzzi provides the ideal setting to enjoy the sunshine and the exceptional surroundings of Les Deux Alpes.

A rare opportunity to acquire a prestigious mountain property in one of the French Alps' most desirable ski resorts.

Information about risks to which this property is exposed is available on the Géorisques website : <https://www.georisques.gouv.fr>

NOTES