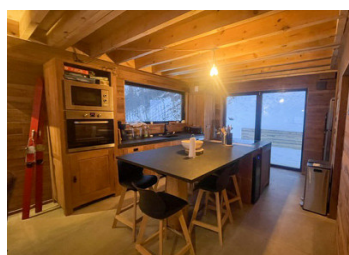


New chalet development in La Plagne. Stunning properties next to the piste.



INFORMATION

Town:	LA PLAGNE
Department:	Savoie
Bed:	6
Bath:	6
Floor:	193 m ²
Plot Size:	160 m ²



IN BRIEF

Le Hameau des Loups is an exclusive new development comprising three beautifully designed Alpine chalets with only six private residences, offering a rare combination of luxury, traditional style and panoramic mountain surroundings.

Chalet C will be delivered in 2026 with one of the two chalets already delivered and the second in full construction this summer.

Five bedrooms (ranging in size from 8,5m² to 10,52m²) on three floors with beautiful mountain views

The fully fitted and beautifully designed kitchen leads through to the spacious lounge-dining area with floor to ceiling windows and south and east-facing balconies

The chalet comes with its own sauna and hot tub for relaxing after a day on the slopes or after some serious walks in the mountains. With only a hundred metres to the La Roche chairlift, you'll be skiing La Plagne in minutes.

ENERGY - DPE

DPE not required.

NB. Quoted prices relate to euro transactions. Fluctuations in exchange rates are not the responsibility of the agency or those representing it. The agency and its representatives are not authorised to make or give guarantees relating to the property. These particulars do not form part of any contract but are to be taken as a general representation of the property. Any areas, measurements or distances are approximate. Text, photographs and plans, where applicable, are for guidance only. Leggett and its representatives have not tested services, equipment or facilities and cannot guarantee the same.

Particulars for off-plan purchases are intended as a guide only. Final finishes to the property may vary. Purchasers are advised to engage a solicitor to check the plans and specifications as laid out in their purchase contract with the developer.



DESCRIPTION

Ground Floor

On this floor is the entrance and spa area with hot tub

The garages are found on the same level of the residence opposite.

First Floor

There are two bedrooms on this level with a shared shower.

Second Floor

Three ensuite bedrooms and the sauna are on this floor. One bedroom has a south facing window whilst the others look over to Mont Saint Jacques and the famous off piste run back to La Roche.

Third Floor

The luxurious open plan living space is spread out over the whole of this floor. A fully fitted kitchen just next to the dining area and access to the south facing balcony gives an inside-outside dining experience. Off the lounge area with its wood burning stove is the large balcony with views of the Tarentaise. Perfect for watching the sunrise with your morning coffee and planning the ski day ahead.

Each residence comes with 3 parking spaces; two garage spaces and an external parking place.

Built to the latest RE2020 environmental standards, the chalets combine traditional Savoyard architecture with high-quality contemporary finishes. The exterior features natural larch wood cladding, local stone façades, and elegant timber balconies, perfectly blending into the alpine landscape.

Each chalet benefits from:

Premium timber-frame construction with enhanced thermal and acoustic insulation

Double-glazed lacquered wood windows

Spacious terraces and balconies with treated timber decking

Underfloor heating throughout with adjustable

LOCAL TAXES

Taxe habitation: EUR

NOTES