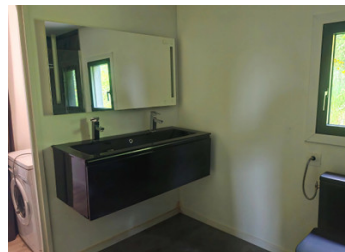


Rare opportunity: contemporary modular home with huge expansion potential



INFORMATION

Town:	Valeilles
Department:	Tarn-et-Garonne
Bed:	2
Bath:	1
Floor:	81 m ²
Plot Size:	8409 m ²



IN BRIEF

Contemporary modular home with expansion potential on large natural plot

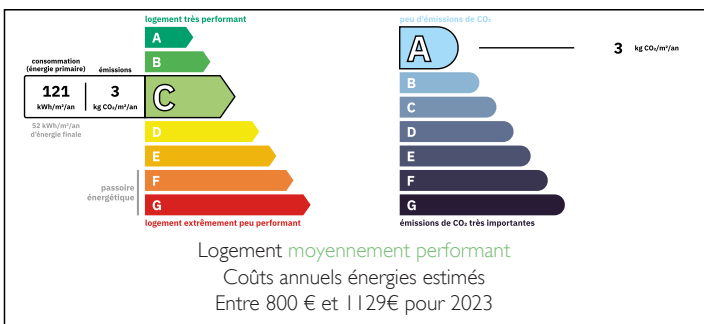
Located in the peaceful village of Valeilles, this 2024 contemporary modular home (container-style construction) offers a unique lifestyle in a green countryside setting.

The property provides approx. 81 m² of living space including a bright open-plan living area with fitted kitchen, 2 bedrooms, a dressing room, a modern shower room and a utility room.

A key feature is its strong evolution potential with possibilities for extension via additional modules, upward construction (subject to planning permission), and flexible future layouts.

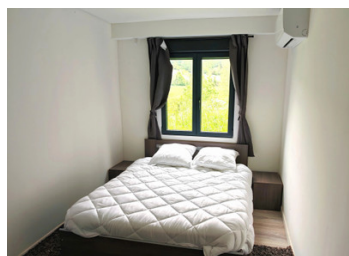
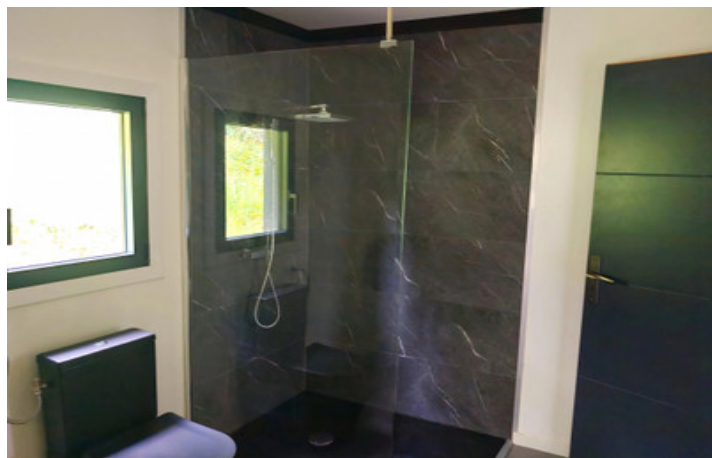
Set on approx. 9000 m² of mostly wooded land, part of which is buildable, offering excellent

ENERGY - DPE



NB. Quoted prices relate to euro transactions. Fluctuations in exchange rates are not the responsibility of the agency or those representing it. The agency and its representatives are not authorised to make or give guarantees relating to the property. These particulars do not form part of any contract but are to be taken as a general representation of the property. Any areas, measurements or distances are approximate. Text, photographs and plans, where applicable, are for guidance only. Leggett and its representatives have not tested services, equipment or facilities and cannot guarantee the same.

Particulars for off-plan purchases are intended as a guide only. Final finishes to the property may vary. Purchasers are advised to engage a solicitor to check the plans and specifications as laid out in their purchase contract with the developer.



DESCRIPTION

UNIQUE CONTEMPORARY MODULAR HOME WITH EXPANSION POTENTIAL ON LARGE NATURAL PLOT

A rare and innovative lifestyle property in a peaceful countryside setting

Located in the charming village of Valeilles, this contemporary 2024 modular home offers a truly distinctive opportunity on the French property market. Built using a container-based architectural concept, it combines modern design, energy efficiency and long-term adaptability, all within a peaceful green environment.

The property offers approximately 81 m² of well-designed living space, featuring a bright open-plan living area with a fitted kitchen, two comfortable bedrooms, a dressing room, a modern shower room, and a practical utility room. The layout is efficient, functional and filled with natural light, providing a comfortable home ready to move into immediately.

A flexible and scalable home concept

A key advantage of this property lies in its strong evolution potential, making it particularly attractive for buyers seeking a long-term project or adaptable living space:

Possibility to extend with additional modular units
Possibility to build upwards (creation of a first floor, subject to planning permission)
Flexible configuration suitable for home office, guest accommodation or rental use

This is a forward-thinking property designed to evolve with your lifestyle over time.

A rare natural setting with development potential

Set on approximately 9000 m² of land, mostly wooded, the property enjoys complete privacy and

LOCAL TAXES

Taxe habitation: EUR

NOTES