

Character residence 343 sqm - nearly 3 ha private grounds with river and tennis court



INFORMATION

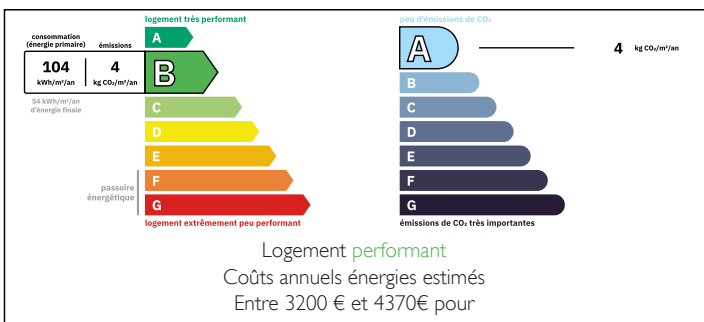
Town:	Pithiviers-le-Vieil
Department:	Loiret
Bed:	6
Bath:	5
Floor:	343 m2
Plot Size:	29274 m2



IN BRIEF

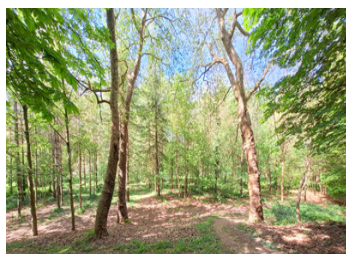
Set within 2.9 hectares (just under 7 acres) of private, unspoiled natural grounds crossed by its own river, this 343 sqm residence offers a rare lifestyle combining space, privacy and potential. Featuring 12 rooms including 6 bedrooms, a tennis court and generous light-filled volumes, it is ideally suited as a family home, a character second residence or a hospitality project, just minutes from local amenities.

ENERGY - DPE



NB. Quoted prices relate to euro transactions. Fluctuations in exchange rates are not the responsibility of the agency or those representing it. The agency and its representatives are not authorised to make or give guarantees relating to the property. These particulars do not form part of any contract but are to be taken as a general representation of the property. Any areas, measurements or distances are approximate. Text, photographs and plans, where applicable, are for guidance only. Leggett and its representatives have not tested services, equipment or facilities and cannot guarantee the same.

Particulars for off-plan purchases are intended as a guide only. Final finishes to the property may vary. Purchasers are advised to engage a solicitor to check the plans and specifications as laid out in their purchase contract with the developer.



DESCRIPTION

- A rare natural setting

The property immediately stands out for its exceptional environment.

The 2.9-hectare grounds combine open lawns, mature trees, a wooded area and a river flowing through the land, creating a peaceful and highly sought-after setting.

A tennis court renovated in 2018 and two terraces positioned to enjoy the garden throughout the day complete the outdoor features.

Total privacy, yet only minutes from shops, schools and services.

- A spacious family home

The house offers 343 sqm of living space across three levels.

From the entrance, the layout flows naturally into a 72 sqm living room, the heart of the home, featuring a closed-hearth fireplace and exposed beams.

Bright and dual-aspect, this space is ideal for both entertaining and everyday living.

The ground floor also includes:

A separate kitchen
Two bedrooms (11 sqm and 24 sqm)
A shower room with walk-in shower
Two independent WCs

- Upstairs accommodation

Upstairs, four additional bedrooms provide flexible accommodation.

Most include their own washbasin and shower, making the layout ideal for large families or guest

LOCAL TAXES

Taxe foncière: **3000 EUR**

Taxe habitation: **EUR**

NOTES