

Garage with outline planning for conversion to habitable space

EXCLUSIVE



## INFORMATION

Town:	Ruffec
Department:	Charente
Bed:	0
Bath:	0
Floor:	0 m <sup>2</sup>
Plot Size:	0 m <sup>2</sup>



## IN BRIEF

Garage with outline planning for conversion into habitable space, either a house or apartments.

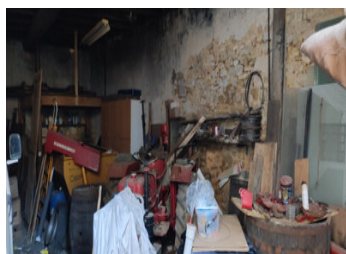


## ENERGY - DPE

DPE not required.

NB. Quoted prices relate to euro transactions. Fluctuations in exchange rates are not the responsibility of the agency or those representing it. The agency and its representatives are not authorised to make or give guarantees relating to the property. These particulars do not form part of any contract but are to be taken as a general representation of the property. Any areas, measurements or distances are approximate. Text, photographs and plans, where applicable, are for guidance only. Leggett and its representatives have not tested services, equipment or facilities and cannot guarantee the same.

Particulars for off-plan purchases are intended as a guide only. Final finishes to the property may vary. Purchasers are advised to engage a solicitor to check the plans and specifications as laid out in their purchase contract with the developer.



## DESCRIPTION

Garage in town centre with upstairs, needing renovation

Outline planning permission has been granted for transformation in to habitable space

Ground floor 100m<sup>2</sup> with upstairs of the same size

Outside : small courtyard which is partly covered.

Access to the courtyard is only through the garage.

-----  
Information about risks to which this property is exposed is available on the Géorisques website : <https://www.georisques.gouv.fr>

## LOCAL TAXES

Taxe habitation: EUR

## NOTES