

A pretty 5 bedroom house with a terrace, pool, meadow and a panoramic view!



INFORMATION

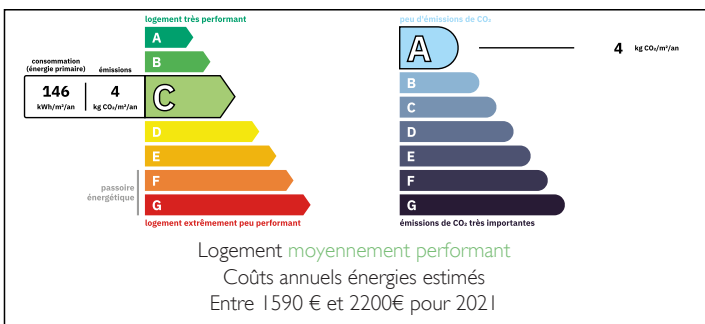
Town:	Clermont-d'Excideuil
Department:	Dordogne
Bed:	5
Bath:	2
Floor:	182 m2
Plot Size:	9057 m2



IN BRIEF

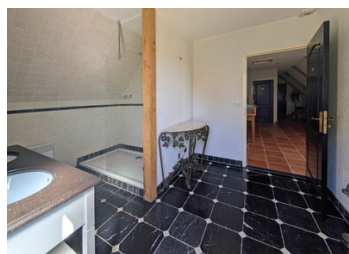
A Cyprus lined drive leads to this pretty, traditionally designed house built in 2008 yet sits as if it has long been there in a commanding position overlooking the most spectacular view. Its large open plan kitchen/sitting/dining room is designed so that the view virtually enters the room to be enjoyed in comfort all year round. The property sits on its own land with enough land for a pony.

ENERGY - DPE



NB. Quoted prices relate to euro transactions. Fluctuations in exchange rates are not the responsibility of the agency or those representing it. The agency and its representatives are not authorised to make or give guarantees relating to the property. These particulars do not form part of any contract but are to be taken as a general representation of the property. Any areas, measurements or distances are approximate. Text, photographs and plans, where applicable, are for guidance only. Leggett and its representatives have not tested services, equipment or facilities and cannot guarantee the same.

Particulars for off-plan purchases are intended as a guide only. Final finishes to the property may vary. Purchasers are advised to engage a solicitor to check the plans and specifications as laid out in their purchase contract with the developer.



DESCRIPTION

Ground level (level with the on north side)
Large kitchen living area with French doors opening onto the terrace and view 56 m²

Utility/pantry 8 m²

Entrance hall 5 m²

W/c with washbasin 1,5 m²

Washroom with bath, shower and washbasin 5 m²

1st bedroom 13 m²

2nd bedroom 12 m²

1st floor

Landing 22,5 m²

3rd bedroom 16 m²

Washroom with double washbasin and large shower 10 m²

W/c with washbasin 4 m²

4th bedroom 15 m²

5th bedroom 14 m²

LOCAL TAXES

Taxe habitation:

EUR

Lower ground level (level with the south side and pool area)

Large room 32 m²

Room (possible 6th bedroom) 11,5 m²

Cellar 8 m²

Large garage and workshop 64 m²

Outside

Swimming pool (salt) 5 x 10 m²

Land 9057 m²

NOTES

Amenities by car

Local shops and super market 5 minutes

Nearest SNCF train station 16 minutes

Nearest airports (Brive) 60 minutes (Limoges) 1hr 15 minutes

Information about risks to which this property is exposed is available on the Géorisques website : <https://www.georisques.gouv.fr>