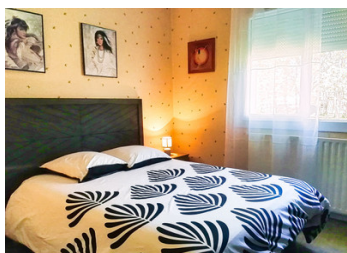


Holiday home near Amboise, the Chaumont Gardens and Chaumont Castle



INFORMATION

Town:	Veuzain-sur-Loire
Department:	Loir-et-Cher
Bed:	3
Bath:	1
Floor:	110 m ²
Plot Size:	1620 m ²

IN BRIEF

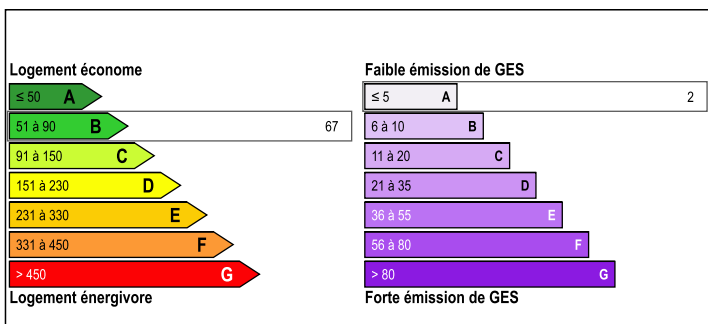
Leggett Immobilier, Centre-Val de Loire. Bruno Debain presents:

Located in ONZAIN 41150, on the border with Touraine (37), this property is ideal as a second home. It is in a peaceful setting, within walking distance of local shops, and just 5 minutes from the Château de Chaumont-sur-Loire and the Chaumont Gardens, as well as the Loire à Vélo cycle route. The town of Amboise is 15 minutes away. House with basement and 3 bedrooms – ready to move into.

The property has been fully renovated, including the façade.

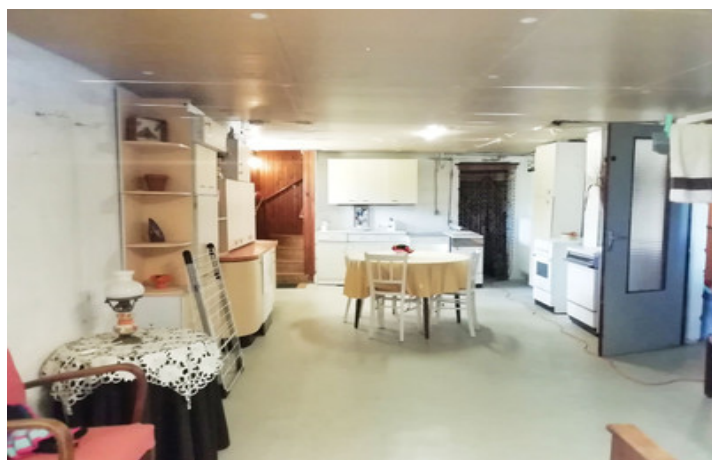
This 3-bedroom house features an open-plan kitchen and a combined living/dining room.

ENERGY - DPE



NB. Quoted prices relate to euro transactions. Fluctuations in exchange rates are not the responsibility of the agency or those representing it. The agency and its representatives are not authorised to make or give guarantees relating to the property. These particulars do not form part of any contract but are to be taken as a general representation of the property. Any areas, measurements or distances are approximate. Text, photographs and plans, where applicable, are for guidance only. Leggett and its representatives have not tested services, equipment or facilities and cannot guarantee the same.

Particulars for off-plan purchases are intended as a guide only. Final finishes to the property may vary. Purchasers are advised to engage a solicitor to check the plans and specifications as laid out in their purchase contract with the developer.



DESCRIPTION

Detached house with basement in Onzain 41150 comprising

1 large living room with an open-plan kitchen, 3 bedrooms of equal size opening onto a hallway, 1 bathroom, 1 separate toilet

New heat pump

Electric roller shutters

Interlocking roof tiles

Can be sold furnished

Numerous photos and 360° videos available on request 06 31 30 32 76 & bruno.debain@leggett.fr

All energy performance certificates are rated A

Information about risks to which this property is exposed is available on the Géorisques website : <https://www.georisques.gouv.fr>

LOCAL TAXES

Taxe foncière: 925 EUR

Taxe habitation: EUR

NOTES