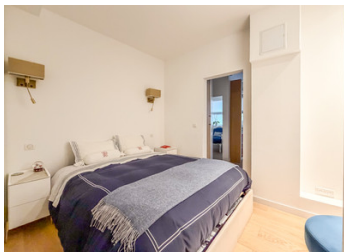


PARIS XVI – Bright and Quiet 61 sqm 3-Room Apartment in an Architect-Designed Building



INFORMATION

Town:	Paris 16e Arrondissement
Department:	Paris
Bed:	2
Bath:	2
Floor:	61 m2
Plot Size:	0 m2

IN BRIEF

PARIS XVI – Just steps from Maison de la Radio, in a prestigious building designed by Jean Ginsberg, LEGGETT Immobilier presents this charming 61 sqm 3-room ground-floor apartment.

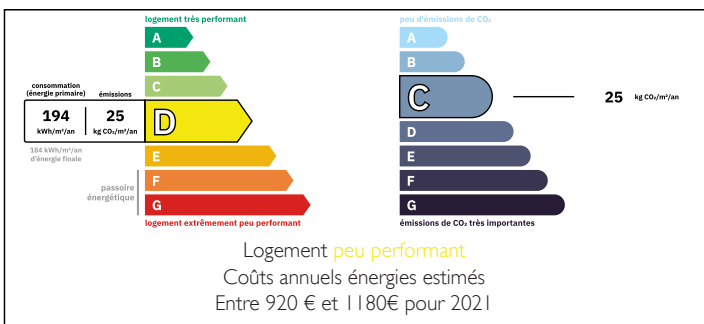
With dual East/West exposure, the property is bright, peaceful, and ideal for both residential and professional use.

Fully furnished and equipped, it features an entrance with built-in storage, a spacious living room, and a modern, fully fitted ergonomic kitchen.

The night area offers two bedrooms, including a master suite with a private shower room, as well as a second independent shower room with WC.

Perfect for liberal professions, this property allows you to combine comfortable living with professional activity.

ENERGY - DPE



NB. Quoted prices relate to euro transactions. Fluctuations in exchange rates are not the responsibility of the agency or those representing it. The agency and its representatives are not authorised to make or give guarantees relating to the property. These particulars do not form part of any contract but are to be taken as a general representation of the property. Any areas, measurements or distances are approximate. Text, photographs and plans, where applicable, are for guidance only. Leggett and its representatives have not tested services, equipment or facilities and cannot guarantee the same.

Particulars for off-plan purchases are intended as a guide only. Final finishes to the property may vary. Purchasers are advised to engage a solicitor to check the plans and specifications as laid out in their purchase contract with the developer.



DESCRIPTION

Located in the prestigious 16th arrondissement, a quintessential residential district renowned for its wide tree-lined avenues, its elegant mansions, and family-friendly atmosphere. This sought-after area offers a privileged living environment, combining bourgeois elegance with cultural dynamism, close to major green spaces such as the Bois de Boulogne and the Jardin du Ranelagh.

The Avenue de Versailles sector enjoys a strategic location along the Seine, offering beautiful walks along the riverbanks. This lively neighborhood features excellent shops, numerous quality restaurants and cafés. Particularly well-served by public transport (Mirabeau metro station, RER C), it provides quick access to central Paris while maintaining a calm and secure residential atmosphere, ideal for families and discerning professionals.

Information about risks to which this property is exposed is available on the Géorisques website : <https://www.georisques.gouv.fr>

LOCAL TAXES

Taxe habitation: EUR

NOTES