

Architect-Designed Villa – Gulf of Saint-Tropez – Le Plan-de-la-Tour



INFORMATION

Town:	Le Plan-de-la-Tour
Department:	Var
Bed:	4
Bath:	4
Floor:	144 m ²
Plot Size:	2242 m ²

IN BRIEF

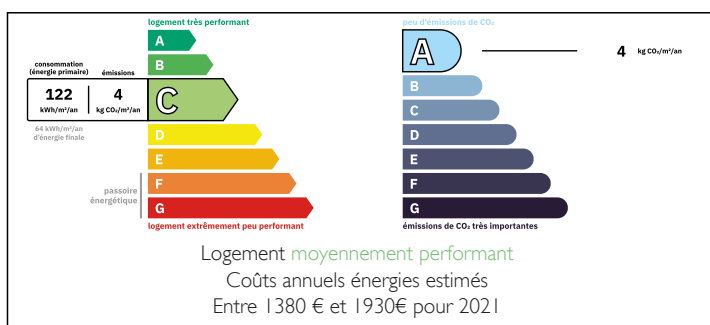
Plan-de-la-Tour – Close to the village with panoramic views

This beautiful Provençal bastide combines authentic southern charm with modern comfort 189m² usable space, ideally located near the heart of Plan-de-la-Tour.

The bright and spacious living room with fireplace opens through large sliding doors onto the terrace, offering stunning panoramic views of the surrounding hills and mountains. The open-plan fully equipped kitchen with dining area creates a welcoming living space.

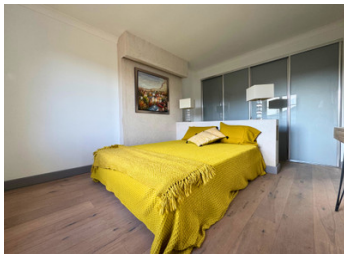
Four bedrooms, each with en-suite bathroom or shower room – including one on the ground floor and one on pool level – provide comfort and privacy.

ENERGY - DPE



NB. Quoted prices relate to euro transactions. Fluctuations in exchange rates are not the responsibility of the agency or those representing it. The agency and its representatives are not authorised to make or give guarantees relating to the property. These particulars do not form part of any contract but are to be taken as a general representation of the property. Any areas, measurements or distances are approximate. Text, photographs and plans, where applicable, are for guidance only. Leggett and its representatives have not tested services, equipment or facilities and cannot guarantee the same.

Particulars for off-plan purchases are intended as a guide only. Final finishes to the property may vary. Purchasers are advised to engage a solicitor to check the plans and specifications as laid out in their purchase contract with the developer.



DESCRIPTION

Elegant Provençal Bastide with Panoramic Views – A True Mediterranean Retreat

Nestled in a privileged setting just moments from the charming village of Plan-de-la-Tour, this elegant Provençal bastide offers the perfect balance between authenticity, comfort and breathtaking natural beauty.

Overlooking rolling hills and unspoiled countryside, the property enjoys spectacular panoramic views and complete tranquility, while remaining close to village life and only a short drive from the Gulf of Saint-Tropez.

Designed for effortless indoor-outdoor living, the spacious and light-filled reception area with fireplace opens entirely onto the sun-drenched terrace through large retractable sliding doors. The result is a seamless connection between interior elegance and the Mediterranean landscape.

The open-plan fully equipped kitchen with dining area is both stylish and functional — ideal for relaxed family living or entertaining guests.

The villa features four en-suite bedrooms, including one on the main level and an independent suite on the pool level, offering privacy and flexibility for family and friends.

The 11 x 5 metre swimming pool is surrounded by beautifully landscaped Mediterranean gardens, while the generous pool house with summer kitchen and lounge area (45m²) creates the perfect setting for long summer evenings.

Additional features include:

Reversible air conditioning

Alarm system

LOCAL TAXES

Taxe habitation: EUR

NOTES