

A building plot with a lovely view on a hillside beside a quiet lane with water and electricity



INFORMATION

Town:	La Chapelle-Saint-Jean
Department:	Dordogne
Bed:	0
Bath:	0
Floor:	0 m2
Plot Size:	7875 m2



IN BRIEF

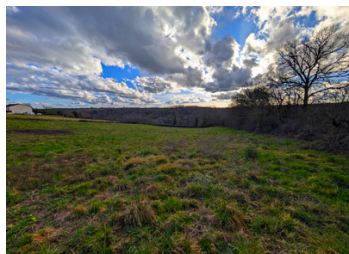
At the edge of a tiny ancient village in the Périgord Noir, a fraction under 2 acres of buildable land consisting of a pretty meadow on a hillside with a lovely view across the valley. The plot of is accessed from a narrow country lane with little traffic, therefore water and electricity are close at hand to be connected.

ENERGY - DPE

DPE not required.

NB. Quoted prices relate to euro transactions. Fluctuations in exchange rates are not the responsibility of the agency or those representing it. The agency and its representatives are not authorised to make or give guarantees relating to the property. These particulars do not form part of any contract but are to be taken as a general representation of the property. Any areas, measurements or distances are approximate. Text, photographs and plans, where applicable, are for guidance only. Leggett and its representatives have not tested services, equipment or facilities and cannot guarantee the same.

Particulars for off-plan purchases are intended as a guide only. Final finishes to the property may vary. Purchasers are advised to engage a solicitor to check the plans and specifications as laid out in their purchase contract with the developer.



DESCRIPTION

null

Information about risks to which this property is exposed is available on the G eorisques website : <https://www.georisques.gouv.fr>

NOTES