

Exceptional Renaissance Château with Panoramic Dordogne views. Perfectly located between Domme and Sarlat



INFORMATION

Town:	Vitrac
Department:	Dordogne
Bed:	10
Bath:	9
Floor:	644 m ²
Plot Size:	80512 m ²



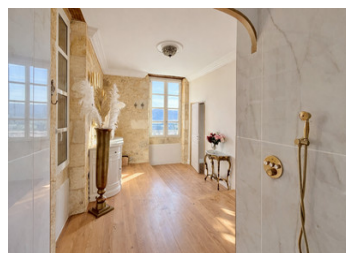
IN BRIEF

Perched above the Dordogne Valley in the charming village of Vitrac, this beautifully restored château which originates from 16th Century, enjoys panoramic views across one of southwest France's most prized landscapes

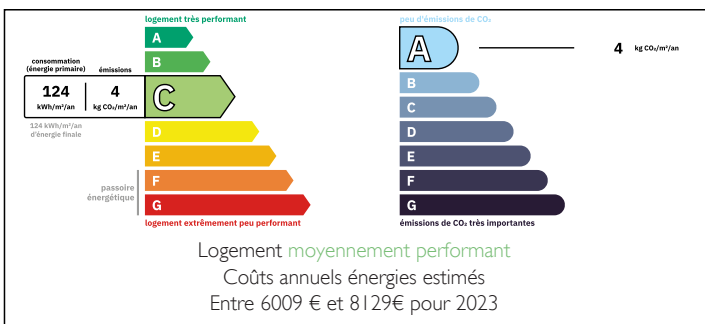
Ideally located between Domme and the medieval jewel Sarlat-la-Canéda, in the heart of the Dordogne, the property offers 644 m² of elegant living space set within 8 hectares of lawns, parkland, meadows and woodland



Renovated throughout with refined taste and quality materials, the château features 10 en-suite bedrooms, three reception rooms, two dining rooms, an orangery and an impressive professional kitchen. Rich in history, its origins linked to the Knights Templar, it also includes an 80 m² cottage to renovate, 100 m² barn, stables, pigeonier and historic ruins

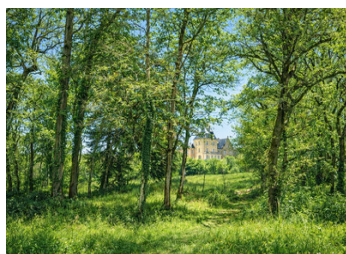


ENERGY - DPE



NB. Quoted prices relate to euro transactions. Fluctuations in exchange rates are not the responsibility of the agency or those representing it. The agency and its representatives are not authorised to make or give guarantees relating to the property. These particulars do not form part of any contract but are to be taken as a general representation of the property. Any areas, measurements or distances are approximate. Text, photographs and plans, where applicable, are for guidance only. Leggett and its representatives have not tested services, equipment or facilities and cannot guarantee the same.

Particulars for off-plan purchases are intended as a guide only. Final finishes to the property may vary. Purchasers are advised to engage a solicitor to check the plans and specifications as laid out in their purchase contract with the developer.



DESCRIPTION

Exceptional Historic Château with Private River Access. Dordogne Valley

Discreetly positioned in the charming village of Vitrac, this extraordinary château commands breathtaking panoramic views across the Dordogne Valley.

Ideally located just 8 km from Sarlat-la-Canéda and 5 km from Domme, it offers privileged access to one of Southwest France's most celebrated regions.

Dating from the 16th and 18th centuries, this rare and distinguished château has been meticulously restored using premium materials and modern technologies, achieving a seamless harmony between historic character and contemporary comfort.

Original architectural features have been carefully preserved, while refined upgrades ensure effortless modern living throughout.

Set within just over 8 hectares of private lawns, meadows, and woodland, the property offers approximately 644 m² of elegant living space, arranged as follows:

Ground Floor

Vaulted basement and wine cellar

Grand reception salon with fireplace leading to a magnificent orangerie opening onto the main terrace
Intimate salon with glass floor and concealed bar

Library

Formal dining room

Tea salon

Professional-grade kitchen with fireplace

Pantry and laundry room

First Floor

Six generously proportioned bedrooms, each with its own private bathroom

Second Floor

Two further en-suite bedrooms

LOCAL TAXES

Taxe habitation:

EUR

NOTES