

Duplex apartment (45m2 floorspace) for sale with basement storage in great location in Meribel centre



INFORMATION

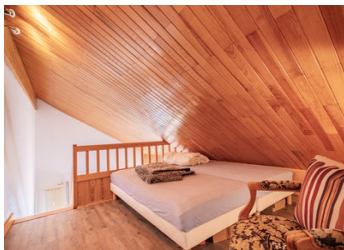
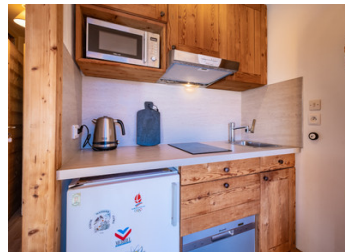
Town:	MERIBEL LES ALLUES
Department:	Savoie
Bed:	3
Bath:	1
Floor:	21 m2
Outside Space:	15 m2

IN BRIEF

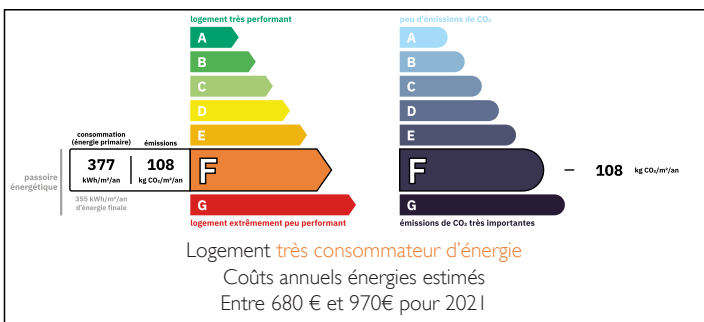
This 45m² (21m² habitable surface + 24m² less than 1m80 in height) duplex apartment enjoys a fantastic location in Méribel centre, only 190m from the pistes in the Rond Point secteur.

Virtually ski-in ski-out, the apartment offers easy access to the slopes and skilifts into the amazing Three Valley ski domain. The location is also just a short walk from the bars, shops, and restaurants of Plateau de Morel area, as well as free shuttle service linking to all other parts of the Meribel valley.

This sensational apartment offers a wonderfully convenient and practical base in the heart of the Meribel Valley.



ENERGY - DPE



NB. Quoted prices relate to euro transactions. Fluctuations in exchange rates are not the responsibility of the agency or those representing it. The agency and its representatives are not authorised to make or give guarantees relating to the property. These particulars do not form part of any contract but are to be taken as a general representation of the property. Any areas, measurements or distances are approximate. Text, photographs and plans, where applicable, are for guidance only. Leggett and its representatives have not tested services, equipment or facilities and cannot guarantee the same.

Particulars for off-plan purchases are intended as a guide only. Final finishes to the property may vary. Purchasers are advised to engage a solicitor to check the plans and specifications as laid out in their purchase contract with the developer.



DESCRIPTION

The apartment comprises an entrance hall, shower room with WC, large storage area, open living space with a kitchenette, dining area, and living area with sofa bed. A large West-facing window opens out onto a spacious balcony of 4,7m² offering a stunning view over the Meribel valley to the West, perfect for enjoying the afternoon sun after an enjoyable days skiing.

On the upper floor is double bedroom on a mezzanine, a hand basin and washing area, and another double bedroom to the rear

Additional features include a basement storage locker.

Co-owned building of 45 units
Provisional annual charges: 1900€

Information about risks to which this property is exposed is available on the Géorisques website : <https://www.georisques.gouv.fr>

LOCAL TAXES

Taxe foncière: 1000 EUR

Taxe habitation: EUR

NOTES