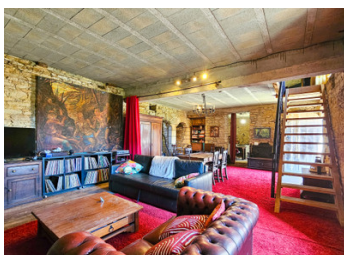


Attractive Cottage with adjoining Historic Manoir for further renovation.



## INFORMATION

Town:	Camors
Department:	Morbihan
Bed:	4
Bath:	2
Floor:	224 m2
Plot Size:	2725 m2



## IN BRIEF

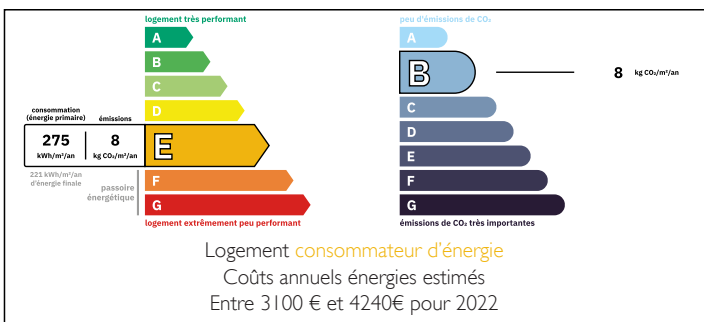
Historic stone property comprising an adjoining cottage and former Manoir, set in a peaceful rural hamlet a few minutes from the lively town of Pluvigner.

'The cottage provides independent, comfortable accommodation, allowing a future owner to live on site while renovation works are undertaken to the Manoir,.

The Manoir retains notable historic features including a former tower, monumental stone fireplace and will appeal to buyers seeking an authentic architectural restoration project with significant historic character.

Close to Auray, the TGV and the coast.

## ENERGY - DPE



NB. Quoted prices relate to euro transactions. Fluctuations in exchange rates are not the responsibility of the agency or those representing it. The agency and its representatives are not authorised to make or give guarantees relating to the property. These particulars do not form part of any contract but are to be taken as a general representation of the property. Any areas, measurements or distances are approximate. Text, photographs and plans, where applicable, are for guidance only. Leggett and its representatives have not tested services, equipment or facilities and cannot guarantee the same.

Particulars for off-plan purchases are intended as a guide only. Final finishes to the property may vary. Purchasers are advised to engage a solicitor to check the plans and specifications as laid out in their purchase contract with the developer.



## DESCRIPTION

MANOIR WITH ADJOINING COTTAGE - RENOVATION PROJECT WITH HISTORIC CHARACTER

Set in a peaceful rural hamlet, only a few minutes from the lively town of Pluvigner, this property offers substantial space, formed from two adjoining traditional stone buildings from different periods reflecting centuries of adaptation and use.

The property comprises a later cottage providing habitable accommodation, together with an older Manor dating back to the medieval period, now requiring further renovation.

### THE COTTAGE

The cottage offers comfortable family accommodation, featuring exposed beams throughout, double glazing and independent of any renovation works to the Manoir, and is arranged as follows:

\*Entrance into a spacious open-plan living/dining room with an American-style kitchen

\*WC with wash-hand basin

\*A large wood-burning stove providing effective heating

\*Wooden open-tread staircase leading to the first floor landing and.....

\*Three bedrooms

\*A generous bathroom with WC, bath and separate shower

Internal access to the Manoir exists on both the ground and first floors.

## LOCAL TAXES

Taxe habitation: EUR

## NOTES