

78740 - ÉVECQUEMONT, Magnificent prestigious modern house, quiet + large garden, terrace, not overlooked

EXCLUSIVE



INFORMATION

Town:	Évecquemont
Department:	Yvelines
Bed:	4
Bath:	2
Floor:	199 m2
Plot Size:	5258 m2

IN BRIEF

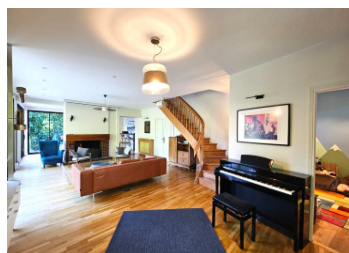
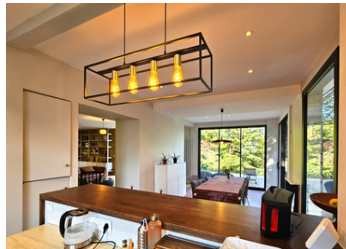
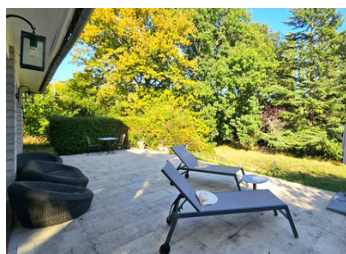
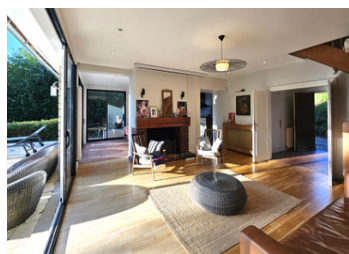
Magnificent prestigious modern house, Landscaped Garden & Garage, Quiet, Near Paris.

Located in the highly sought-after enclave of ÉVECQUEMONT, this elegant 199 m² family residence offers privacy, prestige, and refined living not far from Paris.

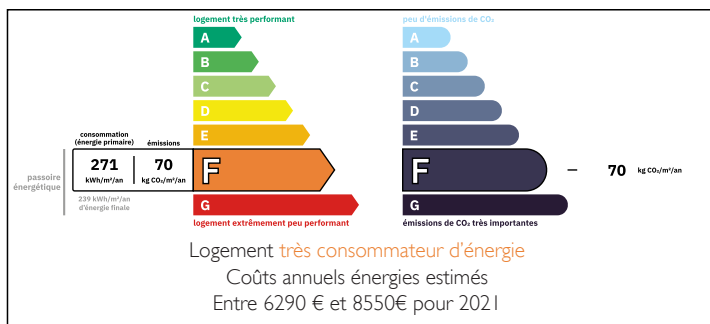
Built in 1965, renovated 2020 with high-end materials, it features vast open-plan receptions, a fully equipped American kitchen with dining area, double living room, a home cinema area, children play room, piano zone.

2nd level of the house includes 5–6 bedrooms including a luxurious master suite with a master bathroom and a WC.

The landscaped, south-facing garden spans 5 258 m² and is ideal for entertaining.

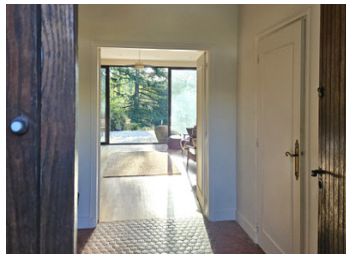


ENERGY - DPE



NB. Quoted prices relate to euro transactions. Fluctuations in exchange rates are not the responsibility of the agency or those representing it. The agency and its representatives are not authorised to make or give guarantees relating to the property. These particulars do not form part of any contract but are to be taken as a general representation of the property. Any areas, measurements or distances are approximate. Text, photographs and plans, where applicable, are for guidance only. Leggett and its representatives have not tested services, equipment or facilities and cannot guarantee the same.

Particulars for off-plan purchases are intended as a guide only. Final finishes to the property may vary. Purchasers are advised to engage a solicitor to check the plans and specifications as laid out in their purchase contract with the developer.



DESCRIPTION

Elegant Family Estate near Paris — Tranquility, Space, and Refined Living in ÉVECQUEMONT.

For Discerning Buyers Seeking a Peaceful Retreat Within Easy Reach of the Capital.

Set in the highly sought-after commune of Vaux-sur-Seine, west of central Paris, this exceptional detached residence offers over 180 m² of luxurious living space, beautifully situated within 5 258 m² of landscaped, walled gardens.

Tucked away in a private, secure cul-de-sac, the property provides an oasis of calm and privacy — a rare offering this close to the capital.

This exclusive home was constructed in 1965 and renovated in 2020 to the highest standards, blending classical elegance with modern comfort and thoughtful functionality.

Every detail — from natural stone flooring and bespoke joinery to expansive windows and garden views — has been designed to enhance well-being and everyday living.

A Home Designed for Comfort, Family Life, and Entertaining

As you step through the grand entrance, you are welcomed by an entrance into the double living room.

The main living area, spanning more than 100 m², features a formal sitting room with a stone fireplace and a home cinema space, a second living room currently used as piano zone, with playroom for children.

Adjacent to the reception spaces is an open dining area and a high-end American kitchen fitted with premium appliances, ample storage, and a separate

LOCAL TAXES

Taxe habitation: EUR

NOTES