

NICE CARRE D'OR. Top floor apartment 210m . 5 room, 3 beds, 3 baths. cellar. Parking + 50 000. Attic room.



INFORMATION

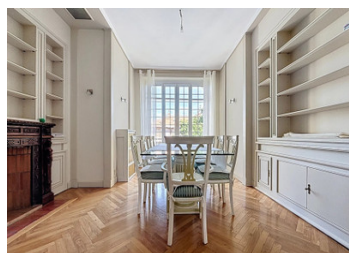
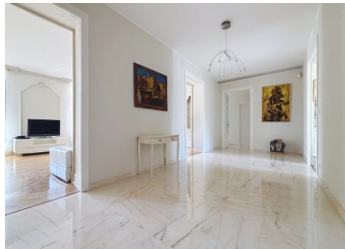
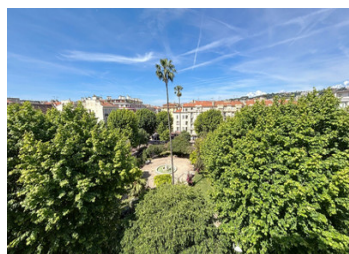
Town:	Nice
Department:	Alpes-Maritimes
Bed:	3
Bath:	3
Floor:	210 m2
Plot Size:	0 m2

IN BRIEF

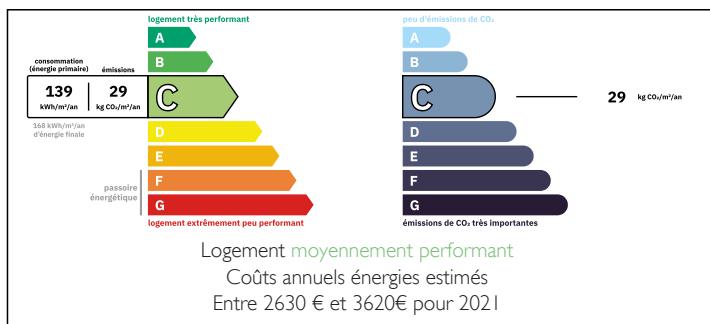
In a beautiful, recently renovated bourgeois building with exceptional common areas, become one of 10 privileged owners.

This bright and quiet 200 m² corner apartment with balconies partially overlooks the Edith Piaf garden.

An additional parking space can be purchased in a nearby building for €50,000.

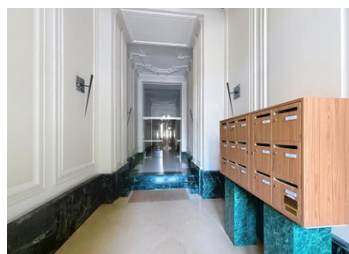


ENERGY - DPE



NB. Quoted prices relate to euro transactions. Fluctuations in exchange rates are not the responsibility of the agency or those representing it. The agency and its representatives are not authorised to make or give guarantees relating to the property. These particulars do not form part of any contract but are to be taken as a general representation of the property. Any areas, measurements or distances are approximate. Text, photographs and plans, where applicable, are for guidance only. Leggett and its representatives have not tested services, equipment or facilities and cannot guarantee the same.

Particulars for off-plan purchases are intended as a guide only. Final finishes to the property may vary. Purchasers are advised to engage a solicitor to check the plans and specifications as laid out in their purchase contract with the developer.



DESCRIPTION

Enter this large apartment through a spacious entrance leading to a truly double living room, a dining room, and a separate kitchen (office + laundry room).

The sleeping area consists of 3 bedrooms, 1 dressing room, and 3 bathrooms, 2 of which have toilets.

The apartment has 2 separate toilets, and you also benefit from a storage room on the top floor.

Information about risks to which this property is exposed is available on the Géorisques website : <https://www.georisques.gouv.fr>

LOCAL TAXES

Taxe habitation: EUR

NOTES