

Charming 19th Century detached rustic farmhouse, comprising 4-Bedrooms and 3 large barns with gardens.

EXCLUSIVE



INFORMATION

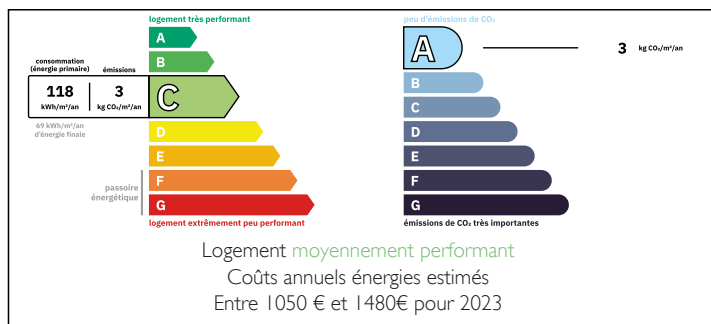
Town:	Vic-en-Bigorre
Department:	Hautes-Pyrénées
Bed:	4
Bath:	2
Floor:	200 m2
Plot Size:	2000 m2

IN BRIEF

Set in a peaceful village location and surrounded by private grounds, this character filled 4-bedroom farmhouse offers space, charm, and versatility in equal measure. Just a 5-minute drive from local shops, restaurants, and commerce, the property is ideally situated for exploring the Pyrenees Mountains, Pau, Lourdes, and the Madiran wine region. It offers the perfect combination of seclusion and convenience.

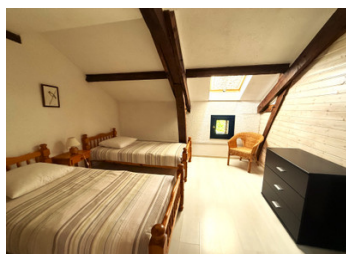
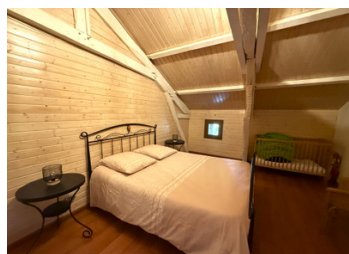


ENERGY - DPE



NB. Quoted prices relate to euro transactions. Fluctuations in exchange rates are not the responsibility of the agency or those representing it. The agency and its representatives are not authorised to make or give guarantees relating to the property. These particulars do not form part of any contract but are to be taken as a general representation of the property. Any areas, measurements or distances are approximate. Text, photographs and plans, where applicable, are for guidance only. Leggett and its representatives have not tested services, equipment or facilities and cannot guarantee the same.

Particulars for off-plan purchases are intended as a guide only. Final finishes to the property may vary. Purchasers are advised to engage a solicitor to check the plans and specifications as laid out in their purchase contract with the developer.



DESCRIPTION

Step inside to discover a home rich in heritage, with patterned river stone walls, an original bread oven, and a large open fireplace with a wood-burning stove creating a warm, welcoming atmosphere in the lounge.

This is a home built for relaxation and connection with nature, while offering easy access to the best of the region., it's a perfect base for hiking, skiing, wine tasting, or simply soaking in the beauty of the French countryside.

Whether you're looking for a permanent residence, holiday getaway, or investment opportunity, this unique farmhouse offers timeless appeal in an exceptional location.

Interior Features

Ground Floor:

Spacious lounge/dining room (49m²) with original wood-burning stove, two radiators, and two sets of patio doors opening onto the front lawn — perfect for seamless indoor-outdoor living.

Double-aspect kitchen (16m²) with plenty of natural light, radiator, and original bread oven.

Large utility/storage room(25m²) with sink white goods and heat pump that runs the central heating and provides hot water — There is ample space in the large utility area for a boot room too.

Bedroom 1 (11.22m²) (ground floor) with ensuite bathroom featuring a bath, double sink, and toilet.

First Floor:

Bedroom 2 (19m²) with built-in wardrobes and patio doors leading onto a Juliet balcony.

Bedroom 3 (17m²) with built-in wardrobes.

LOCAL TAXES

Taxe habitation: EUR

NOTES