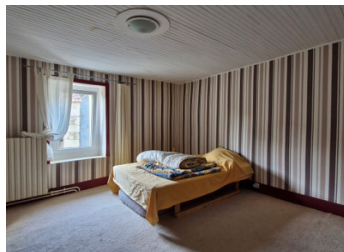
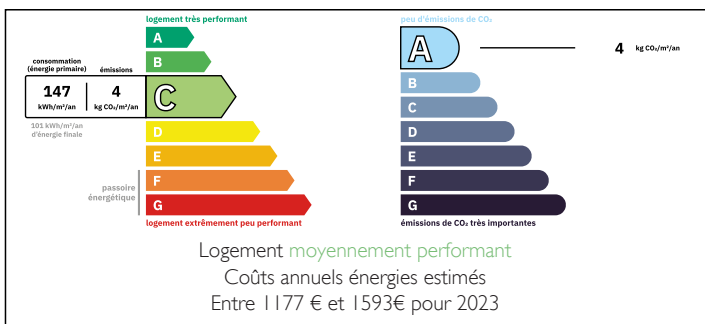


Semi detached house in a quiet hamlet with great views.



ENERGY - DPE



INFORMATION

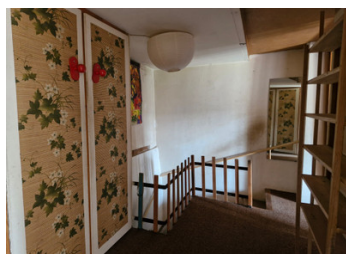
Town:	Saint-Pierre-le-Vieux
Department:	Saône-et-Loire
Bed:	3
Bath:	1
Floor:	130 m2
Plot Size:	282 m2

IN BRIEF

If you are looking for a family home in a quite location this property is worth your consideration. This 3/4 bedroom property has a newly installed heat pump and new exterior insulation so you will be sure to be warm in the winter months. A huge barn giving potential for development and a non-attached garden with magnificent views over the countryside.

NB. Quoted prices relate to euro transactions. Fluctuations in exchange rates are not the responsibility of the agency or those representing it. The agency and its representatives are not authorised to make or give guarantees relating to the property. These particulars do not form part of any contract but are to be taken as a general representation of the property. Any areas, measurements or distances are approximate. Text, photographs and plans, where applicable, are for guidance only. Leggett and its representatives have not tested services, equipment or facilities and cannot guarantee the same.

Particulars for off-plan purchases are intended as a guide only. Final finishes to the property may vary. Purchasers are advised to engage a solicitor to check the plans and specifications as laid out in their purchase contract with the developer.



LOCAL TAXES

Taxe habitation: EUR

NOTES

DESCRIPTION

Semi-detached family home in a quite location, short distance to amenities. This 3/4 bedroom property has a newly installed heat pump and new exterior insulation so you will be sure to be warm in the winter months.

Layout, from the front entrance there is the kitchen/dining room to your right, this is semi-partitioned from the living room which has a wood burner. Both rooms have lovely views over the surrounding countryside. On the other side of the entrance is access to a WC and laundry room. Through this room you have the bureau or 4th bedroom depending on your needs, this room has a door to the outside. Stairs give access to a large bedroom 3 and corridor leading to the bathroom and WC. From the living room there is another staircase that gives access to the 2 front bedrooms that have lovely countryside views. Bedroom 1 has a large dressing room attached and the bedroom 2 has a mezzanine large enough for a bed. These rooms join a large hallway with storage and access to the bathroom and WC. Outside there is access to the cellars and opposite is a huge barn with great potential for development. The non-attached garden has magnificent views over the countryside.

Work that needs to be done, quotes available on request:

Connection to mains water

Installation of a separate wastewater treatment, MicroStation

Roof

General decoration

Ground floor

Entrance hall

Kitchen dining room/Living room 40m²

Stairs to bedrooms 1 and 2

Bedroom...