

Cosy studio apartment in quiet area, with outside terrace and private parking only 200m to Diable ski lift

EXCLUSIVE

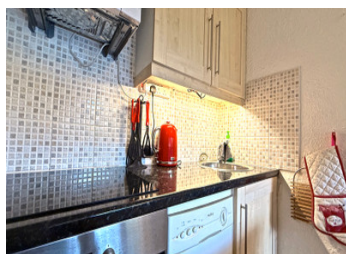


INFORMATION

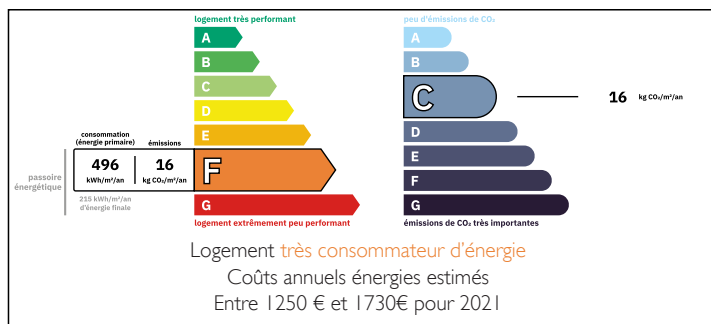
Town:	Les Deux Alpes
Department:	Isère
Bed:	1
Bath:	1
Floor:	28.5 m2
Outside Space:	9 m2

IN BRIEF

This cosy studio apartment 27 m2, has a south facing ground floor patio with views towards the ski slopes and the surrounding mountains. Another perfect escape pad in a calm desirable area of the resort and only 200m from the nearest lift. Ideal for summer and winter breaks, and perfect for rentals. This fantastic studio is easy to maintain but provides all the benefits of being close to the key amenities in town.

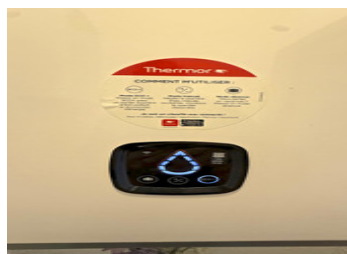


ENERGY - DPE



NB. Quoted prices relate to euro transactions. Fluctuations in exchange rates are not the responsibility of the agency or those representing it. The agency and its representatives are not authorised to make or give guarantees relating to the property. These particulars do not form part of any contract but are to be taken as a general representation of the property. Any areas, measurements or distances are approximate. Text, photographs and plans, where applicable, are for guidance only. Leggett and its representatives have not tested services, equipment or facilities and cannot guarantee the same.

Particulars for off-plan purchases are intended as a guide only. Final finishes to the property may vary. Purchasers are advised to engage a solicitor to check the plans and specifications as laid out in their purchase contract with the developer.



DESCRIPTION

The studio comprises a sitting room with kitchenette, a bathroom with bath, separate W.C and a "coin Montagne" with triple bunk beds. There is a sofa bed in the main living area. The apartment also has a private ski locker and non-allocated private parking beside the property. The private outside terrace 8m2 is ideal for summer BBQ's and chilling with a beer after a sporting day on the mountain.

The property is sold fully furnished with all equipment ready for personal use or rentals.

Proximity to the ski lifts and free ski-bus pick up points facilitate an easy start to the day from your chosen location whether it be for skiing in the winter or mountain biking or glacier skiing in the summer

LOCAL TAXES

Taxe foncière:	917 EUR
Taxe habitation:	EUR

The annual charges - 1096€

Taxe Foncière – 917€

Taxe d'Habitation – 626€

Co-owned building of 2 units

Provisional annual charges: 1096€

Information about risks to which this property is exposed is available on the Géorisques website : <https://www.georisques.gouv.fr>

NOTES