

House with large garden close to amenities



INFORMATION

Town:	Bassillac et Auberoche
Department:	Dordogne
Bed:	3
Bath:	1
Floor:	127 m2
Plot Size:	3954 m2

IN BRIEF

Renovated 1950s house close to amenities with wooded garden.

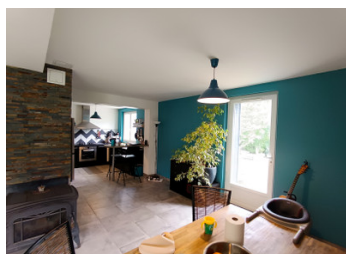
It comprises an entrance hall with toilet - large L-shaped living room with open-plan fitted kitchen and lounge opening onto the outside - laundry room - separate toilet.

Upstairs: 3 bedrooms - 1 large bathroom with shower and an additional room (former shower room) - 1 separate toilet.

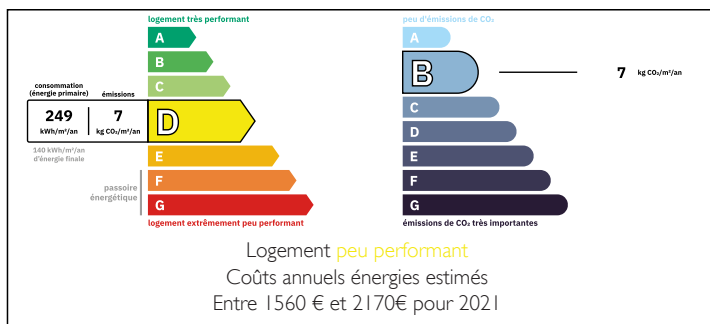
It is located at the end of a long driveway with a large fenced garden surrounded by greenery - wooden terrace - wooden shelters.

Geothermal heating and wood stove.

Come and see for yourself, close to all amenities in a sought-after area.



ENERGY - DPE



NB. Quoted prices relate to euro transactions. Fluctuations in exchange rates are not the responsibility of the agency or those representing it. The agency and its representatives are not authorised to make or give guarantees relating to the property. These particulars do not form part of any contract but are to be taken as a general representation of the property. Any areas, measurements or distances are approximate. Text, photographs and plans, where applicable, are for guidance only. Leggett and its representatives have not tested services, equipment or facilities and cannot guarantee the same.

Particulars for off-plan purchases are intended as a guide only. Final finishes to the property may vary. Purchasers are advised to engage a solicitor to check the plans and specifications as laid out in their purchase contract with the developer.



DESCRIPTION

Renovated 1950s house close to amenities with wooded garden.

It comprises an entrance hall with toilet - large L-shaped living room with open-plan fitted kitchen and lounge opening onto the outside - laundry room - separate toilet.

Upstairs: 3 bedrooms - 1 large bathroom with shower and an additional room (former shower room) - 1 separate toilet.

It is located at the end of a long driveway with a large fenced garden surrounded by greenery - wooden terrace - wooden shelters.

Geothermal heating and wood stove.

Come and see for yourself, close to all amenities in a sought-after area.

Information about risks to which this property is exposed is available on the Géorisques website : <https://www.georisques.gouv.fr>

LOCAL TAXES

Taxe foncière: 793 EUR

Taxe habitation: EUR

NOTES