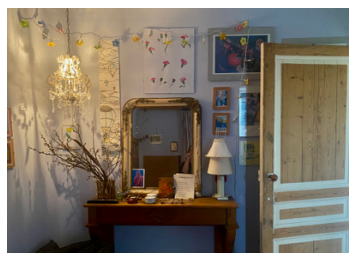
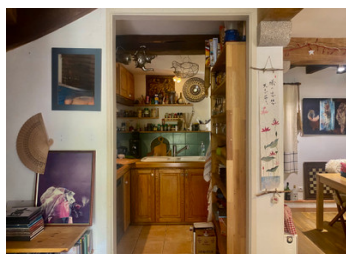
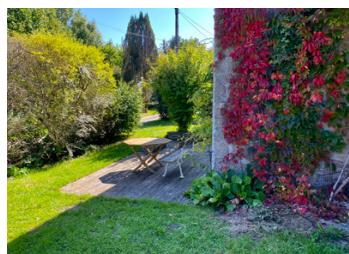


Charming renovated house with garden and views, ready to move into



INFORMATION

Town:	Saint-Pierre-Bellevue
Department:	Creuse
Bed:	3
Bath:	2
Floor:	100 m2
Plot Size:	2023 m2



IN BRIEF

Charming, ready-to-move-in house in a quiet hamlet of Saint-Pierre-Bellevue – an oasis of peace and nature.

With 3 bedrooms, 2 bathrooms and the possibility of an extra bedroom on the ground floor, this house offers space and flexibility for the whole family.

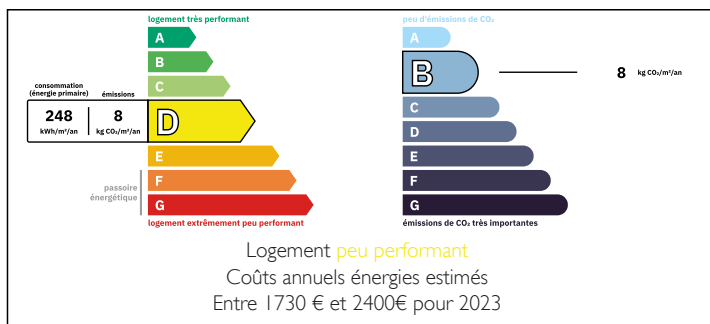
Recently renovated and equipped with double glazing, pellet boiler and heat pump for modern living comfort.

Enjoy long summer days in the garden with beautiful views and total silence.

Just 11 minutes from Royère-de-Vassivière with shops and amenities, and a short distance from Bourgneuf and Aubusson.

A place to fall in love with immediately!

ENERGY - DPE



NB. Quoted prices relate to euro transactions. Fluctuations in exchange rates are not the responsibility of the agency or those representing it. The agency and its representatives are not authorised to make or give guarantees relating to the property. These particulars do not form part of any contract but are to be taken as a general representation of the property. Any areas, measurements or distances are approximate. Text, photographs and plans, where applicable, are for guidance only. Leggett and its representatives have not tested services, equipment or facilities and cannot guarantee the same.

Particulars for off-plan purchases are intended as a guide only. Final finishes to the property may vary. Purchasers are advised to engage a solicitor to check the plans and specifications as laid out in their purchase contract with the developer.



DESCRIPTION

Discover this charming semi-detached property in idyllic Saint-Pierre-Bellevue. This ready-to-move-in, well-maintained house has been recently renovated and meets all modern standards.

It is located in a small, quiet hamlet surrounded by nature, forests and walking and cycling paths – a true paradise for lovers of peace and quiet and the outdoors.

Inside, you will find a minimalist but warmly decorated interior with a fitted kitchen, two bathrooms and three bedrooms. On the ground floor, there is also a music room, which can easily be converted into an extra bedroom if desired, in combination with the bathroom on the same level. Thanks to recent renovations, you can enjoy modern amenities such as double glazing, a pellet boiler and a heat pump – energy efficient and comfortable.

Outside, there is a beautiful, low-maintenance garden where you can relax in the summer and enjoy the beautiful views and the tranquillity of nature.

Septic tank in good condition and fully functional, not yet compliant with current regulations.

The location is ideal: only 11 minutes from Royère-de-Vassivière with its supermarket and other amenities, 5 minutes from the village bakery, 15 minutes from Bourganeuf and 30 minutes from Aubusson.

A ready-to-move-in property in a quiet, rural setting – definitely worth a visit! Don't hesitate to come and discover this gem.

Information about risks to which this property is exposed is available on the Géorisques website : <https://www.georisques.gouv.fr>

LOCAL TAXES

Taxe foncière: 729 EUR

Taxe habitation: EUR

NOTES