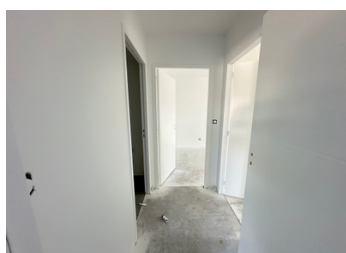
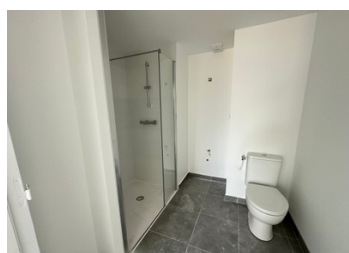


NEW APARTMENT on the ground floor 3 BEDROOMS 111 m terrace DELIVERY NOVEMBER 2025 APARTMENT 008



Niveau	Logement	Type
RDC	008	T4

PIECES	SURFACES
Entrée + Pl	9.16 m ²
Séjour / Cuisine	43.31 m ²
Celler	4.62 m ²
Chambre 1 + Pl	13.56 m ²
Chambre 2 + Pl	12.30 m ²
Chambre 3	13.12 m ²
SdB	5.69 m ²
SdE + Wc	4.05 m ²
Dégagement	2.30 m ²
Wc	3.09 m ²
TOTAL	111.20 m²



ENERGY - DPE

DPE not required.

INFORMATION

Town:	Pléneuf-Val-André
Department:	Côtes-d'Armor
Bed:	3
Bath:	2
Floor:	111 m ²
Outside Space:	29 m ²

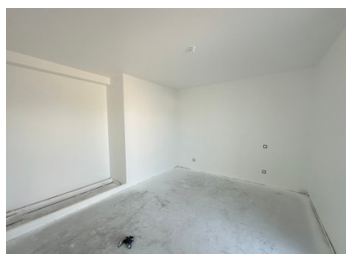
IN BRIEF

In the Côtes d'Armor region of Brittany, in PLÉNEUF-VAL-ANDRÉ, a historic family seaside resort, this magnificent residence is part of a 3-storey development overlooking the port of Dahouët. 27 flats from T2 to T5 with terraces and balconies and/or small private gardens. Walking distance to local shops and the Saturday market on the port. Sandy beaches, coastal path, cycling, fishing, 18-hole golf course, spa, casino. Close to Rennes and ferries from Saint-Malo to Jersey, Plymouth and Portsmouth.

DELIVERY NOVEMBER 2025

NB. Quoted prices relate to euro transactions. Fluctuations in exchange rates are not the responsibility of the agency or those representing it. The agency and its representatives are not authorised to make or give guarantees relating to the property. These particulars do not form part of any contract but are to be taken as a general representation of the property. Any areas, measurements or distances are approximate. Text, photographs and plans, where applicable, are for guidance only. Leggett and its representatives have not tested services, equipment or facilities and cannot guarantee the same.

Particulars for off-plan purchases are intended as a guide only. Final finishes to the property may vary. Purchasers are advised to engage a solicitor to check the plans and specifications as laid out in their purchase contract with the developer.



DESCRIPTION

This 111.20 m² three-bedroom flat on the ground floor, facing west, has three bedrooms, one living room/kitchen, a pantry, a shower room with toilet, another toilet, one bathroom, a terrace, a garden, and two covered parking spaces in the basement (spaces 26 and 31M).

The surface areas are as follows:

Entrance hall/cupboard 9.16 m²

Living room/kitchen 43.31 m²

Pantry 4.62 m²

Bedroom 1 + cupboard 13.56 m²

Bedroom 2 + cupboard 12.30 m²

Bedroom 3 13.12 m²

Shower room + WC 4.05 m²

Bathroom 5.69 m²

Hallway 2.30 m²

WC 3.09 m²

TOTAL 111.20 m²

Terrace 13.47 m²

Garden 15.92 m²

DELIVERY NOVEMBER 2025

Other units available from 1-bedroom to 4-bedroom apartments from €281,000 to €776,000

Information about risks to which this property is exposed is available on the Géorisques website : <https://www.georisques.gouv.fr>

LOCAL TAXES

Taxe habitation: EUR

NOTES