

Elegant neo-Norman residence, 366 m of charm, modern comfort and an exclusive 8000 m park.

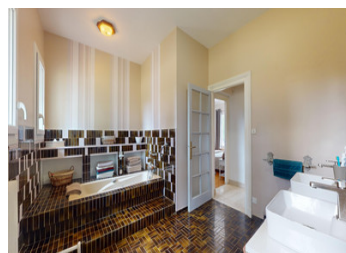


INFORMATION

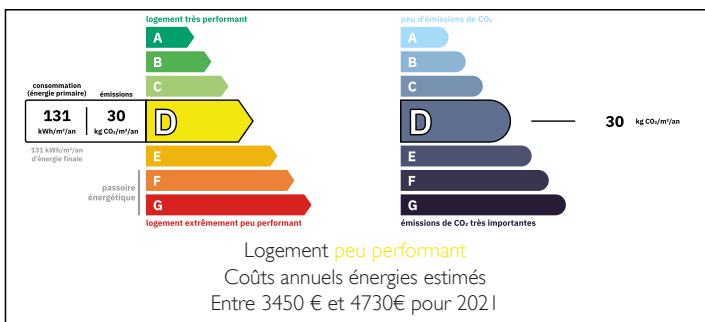
Town:	Mottier
Department:	Isère
Bed:	5
Bath:	3
Floor:	366 m2
Plot Size:	9940 m2

IN BRIEF

Located in Le Mottier, this prestigious 366 m² residence embodies the elegance of French bourgeois architecture with neo-Norman inspiration. Its steep tiled roof, refined dormer windows and traditional shutters give it timeless character and distinction. Fully renovated with exquisite taste, the property offers a bright triple-aspect living room, formal dining room, separate kitchen, and five spacious bedrooms spread over two floors. The lower level includes a complete basement with garage, storage areas, laundry, and a fully equipped 49 m² studio opening onto a west-facing terrace. Set within a landscaped and fully enclosed park of more than 8,000 m², this home combines authentic charm with modern comfort. Ideally located, 40 minutes from Grenoble, 50 minutes from Lyon Saint-Exupéry International Airport, it is the perfect retreat for those seeking generous living spaces, refined French lifestyle, and a serene natural environment.



ENERGY - DPE



NB. Quoted prices relate to euro transactions. Fluctuations in exchange rates are not the responsibility of the agency or those representing it. The agency and its representatives are not authorised to make or give guarantees relating to the property. These particulars do not form part of any contract but are to be taken as a general representation of the property. Any areas, measurements or distances are approximate. Text, photographs and plans, where applicable, are for guidance only. Leggett and its representatives have not tested services, equipment or facilities and cannot guarantee the same.

Particulars for off-plan purchases are intended as a guide only. Final finishes to the property may vary. Purchasers are advised to engage a solicitor to check the plans and specifications as laid out in their purchase contract with the developer.



DESCRIPTION

null

Information about risks to which this property is exposed is available on the Géorisques website : <https://www.georisques.gouv.fr>

LOCAL TAXES

Taxe habitation: EUR

NOTES