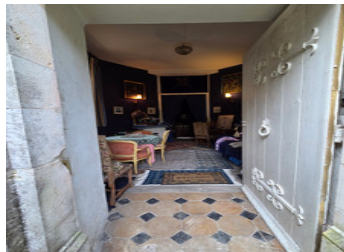


Magnificent 13th Century Chateau with Chapel, Dovecote & 2.5 ha Grounds



INFORMATION

Town:	Vicq
Department:	Allier
Bed:	6
Bath:	3
Floor:	356 m2
Plot Size:	25000 m2



IN BRIEF

This remarkable château, with origins dating back to 1234, offers a rare opportunity to acquire a historic property full of authentic charm. Highlights include grand fireplaces, French ceilings, original woodwork, and parquet floors.



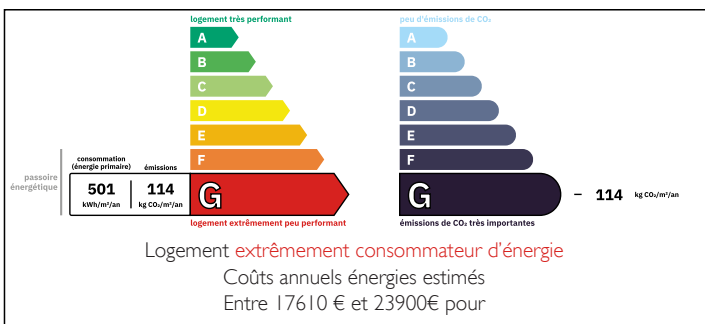
Set in 2.5 hectares of walled grounds with open views, the estate features outstanding outbuildings such as a 17th-century listed dovecote, an 18th-century chapel with 14th-century vaulted ceilings, barns, and a caretaker's house to renovate.



The château itself boasts elegant reception rooms, a library, dining hall, private apartment, 5 bedrooms, and vast attics, along with vaulted cellars and old kitchens.

While structurally sound and centrally heated, the interiors would benefit from modernization.

ENERGY - DPE



NB. Quoted prices relate to euro transactions. Fluctuations in exchange rates are not the responsibility of the agency or those representing it. The agency and its representatives are not authorised to make or give guarantees relating to the property. These particulars do not form part of any contract but are to be taken as a general representation of the property. Any areas, measurements or distances are approximate. Text, photographs and plans, where applicable, are for guidance only. Leggett and its representatives have not tested services, equipment or facilities and cannot guarantee the same.

Particulars for off-plan purchases are intended as a guide only. Final finishes to the property may vary. Purchasers are advised to engage a solicitor to check the plans and specifications as laid out in their purchase contract with the developer.



DESCRIPTION

This magnificent chateau, with origins dating back to 1234, is a property of rare distinction, combining history, character, and potential. It retains many authentic architectural features, including beautiful fireplaces, French ceilings, parquet floors, and finely preserved woodwork.

The chateau is set within 2.5 hectares of partly walled grounds, offering open views, multiple entrances, mature fruit trees, and a well. Outbuildings include a caretaker's house for renovation (75 m² plus an upper floor), two spacious barns (168 m² and 126 m²), a traditional 17th-century dovecote listed as a historic monument, and an 18th-century chapel incorporating vaulted ceilings dating from the 14th century.

Layout:

Ground floor: Entrance hall (18 m²) with roof terrace above, elegant living room (39 m²) with fireplace, library (37 m²) with fireplace, dining room (36 m²) with fireplace, spiral staircase in the tower, staircase to upper floors and basement, WC in the second tower, and a private apartment comprising entrance, dining room, kitchen, bedroom, and bathroom.

First floor: Landing and corridor along the façade, WC in the tower, four bedrooms (16, 20, 16 and 19 m²), including one with private bathroom, plus an additional bathroom in the tower.

Second floor: Accessible by two staircases, leading to one bedroom and a vast attic space of approx. 90 m².

Cellars: Several vaulted cellars and the old kitchens, now used as a boiler room.

The chateau is structurally in good condition and equipped with oil-fired central heating. While the interior has great charm and many period features, it requires modernization to meet...

LOCAL TAXES

Taxe habitation: EUR

NOTES