

Spacious 4-bedroom character property to update set in enclosed large wooded park in Descartes.

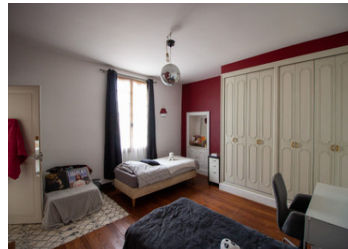


INFORMATION

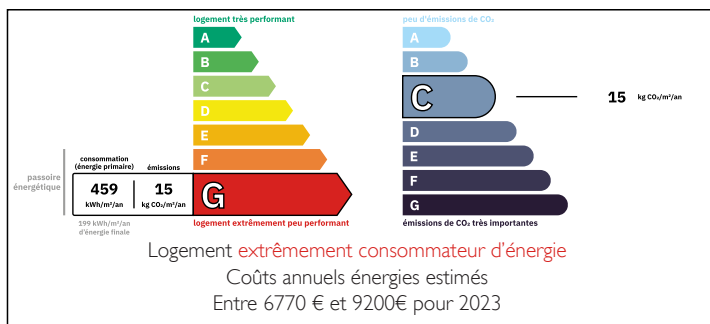
Town:	Descartes
Department:	Indre-et-Loire
Bed:	4
Bath:	1
Floor:	196 m2
Plot Size:	4085 m2

IN BRIEF

Located in the centre of Descartes, this spacious character property to update, is laid out over a number of floors. It benefits from having three large three to develop and create further living space. Outside, there is off road parking and a double garage in the heart of the wooded park.

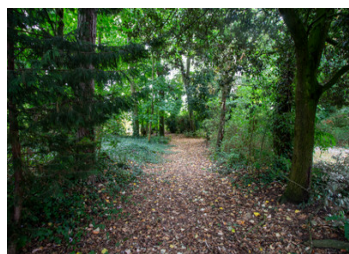


ENERGY - DPE



NB. Quoted prices relate to euro transactions. Fluctuations in exchange rates are not the responsibility of the agency or those representing it. The agency and its representatives are not authorised to make or give guarantees relating to the property. These particulars do not form part of any contract but are to be taken as a general representation of the property. Any areas, measurements or distances are approximate. Text, photographs and plans, where applicable, are for guidance only. Leggett and its representatives have not tested services, equipment or facilities and cannot guarantee the same.

Particulars for off-plan purchases are intended as a guide only. Final finishes to the property may vary. Purchasers are advised to engage a solicitor to check the plans and specifications as laid out in their purchase contract with the developer.



DESCRIPTION

Entering the entrance hall (9 m²), to the left is a double living room (42 m²) with access to the glass-roofed conservatory (10 m²) with views over the grounds. Continuing through the hall to the right, there is a cloakroom (5 m²) and WC (1 m²) under the staircase. Continuing through, is the dining room (20 m²) from where you can also access the conservatory, the kitchen (10 m²) and utility room (20 m²) which has a door out to the side of the property. There is a convertible attic space (40 m²) accessed from the utility room.

Back in the entrance hall, the wooden staircase leads to a half-landing from where you access the first bedroom (22 m²) with ensuite shower room (5 m²) with shower, sink and WC. Taking the stairs to the first floor, off a landing (5 m²) are two further bedrooms (16 m² & 19 m²), to the rear, one with dressing room (4 m²) attached and to the front, one with a room with sink (3 m²) attached which could take a shower. Continuing up the stairs, off another half-landing is a storeroom (3 m²) and up on the second floor is the fourth bedroom (22 m²) with room (5 m²) attached to convert to a bathroom. The staircase continues to two attic spaces ((39 m² and 50 m²).

Below the house is a vaulted cellar. At the gated entrance to the property, there is a small shed. There...

LOCAL TAXES

Taxe habitation: EUR

NOTES