

Unique detached hamlet home with numerous opportunities to expand accommodation for business or pleasure.

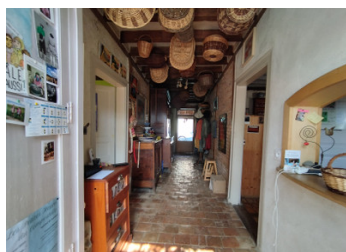


## INFORMATION

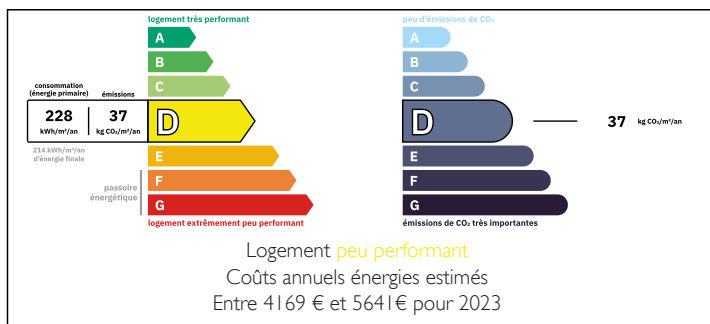
|             |          |
|-------------|----------|
| Town:       | Chaillac |
| Department: | Indre    |
| Bed:        | 3        |
| Bath:       | 2        |
| Floor:      | 189 m2   |
| Plot Size:  | 20000 m2 |

## IN BRIEF

4 Bedroom detached house with ground floor bedroom, toilet and walk in shower. Kitchen and 2nd reception room. Large open plan first floor with multiple accommodation possibilities and attached converted annex. Outside offers two large barns, woodland, two poly tunnels, a garage and two small ponds.



## ENERGY - DPE



NB. Quoted prices relate to euro transactions. Fluctuations in exchange rates are not the responsibility of the agency or those representing it. The agency and its representatives are not authorised to make or give guarantees relating to the property. These particulars do not form part of any contract but are to be taken as a general representation of the property. Any areas, measurements or distances are approximate. Text, photographs and plans, where applicable, are for guidance only. Leggett and its representatives have not tested services, equipment or facilities and cannot guarantee the same.

Particulars for off-plan purchases are intended as a guide only. Final finishes to the property may vary. Purchasers are advised to engage a solicitor to check the plans and specifications as laid out in their purchase contract with the developer.



## LOCAL TAXES

Taxe habitation: EUR

## NOTES

## DESCRIPTION

From the minute you arrive at this property it welcomes you with a style all of its own, from the boomerang shaped kitchen table to the unique pieces of art scattered throughout the garden. The front door leads you into a hallway with the original terracotta tiled floor. To the left is the 2nd reception room which is currently used as the families office, further on is the ground bedroom with a Moroccan style walk in shower. There is also a separate toilet and access to the rear of the property. If you turn right as you enter the hallway it takes you into a large family kitchen with original bread oven and dining space. There is a large log burning stove and free standing furniture with the unique boomerang shaped table sitting as the main focus. The stairs to the first floor are accessed via a lobby area from the rear of the kitchen. The first floor needs to be seen to be appreciated for the flexibility it offers, currently it's sectioned into relaxation space; work space and an open bedroom area which could be screened off to provide more privacy. Two mezzanine floors provide further bedroom areas, there is a dressing space and family bathroom also on this floor. To the rear of the house is a large barn used for storage but with possibilities to create work space or accommodation. To the front of the property a path leads you past...