

Superb location for this one bedroom apartment in the high altitude resort of La Plagne, sleeps 4-5 people

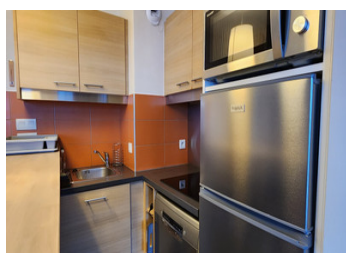
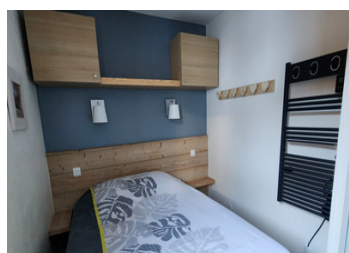


INFORMATION

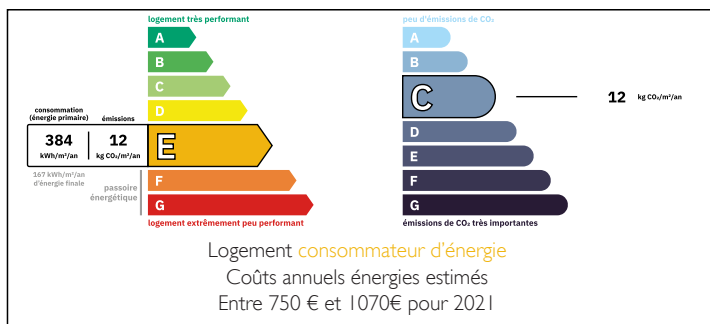
Town:	LA PLAGNE
Department:	Savoie
Bed:	1
Bath:	1
Floor:	30.31 m2
Outside Space:	7 m2

IN BRIEF

Bright and sunny apartment in the high altitude resort of La Plagne. Located in the centre of Plagne 1800 close to bars and restaurants, it has one bedroom but can sleep 4/5 people. It also comes with access included to a swimming pool, squash court and tennis court in the summer. Only a short distance to the pistes (250m)



ENERGY - DPE



NB. Quoted prices relate to euro transactions. Fluctuations in exchange rates are not the responsibility of the agency or those representing it. The agency and its representatives are not authorised to make or give guarantees relating to the property. These particulars do not form part of any contract but are to be taken as a general representation of the property. Any areas, measurements or distances are approximate. Text, photographs and plans, where applicable, are for guidance only. Leggett and its representatives have not tested services, equipment or facilities and cannot guarantee the same.

Particulars for off-plan purchases are intended as a guide only. Final finishes to the property may vary. Purchasers are advised to engage a solicitor to check the plans and specifications as laid out in their purchase contract with the developer.



DESCRIPTION

Charming 1-Bedroom Apartment in La Plagne, nestled in the heart of Plagne 1800, this beautifully presented apartment combines modern comfort, alpine charm, and an unbeatable location just 250m from the ski slopes and lifts. Whether you're looking for a personal mountain retreat or a high-potential rental investment, this property ticks every box.

Step into a warm, light-filled lounge and dining area, designed for relaxation after a day on the slopes. The space features a large wooden dining table, comfortable seating (including a convertible sofa bed), a 65" Ambilight TV for cosy evenings, and direct access to a sunny **south-facing balcony** with breathtaking, unobstructed views over Plagne Centre and Aime 2000.

The recently upgraded kitchen is fitted with high-end appliances and clever storage solutions. From the induction hob and built-in oven to the dishwasher and multiple coffee machines, it's ready for everything from a quick breakfast before hitting the slopes to a traditional Savoyard raclette or fondue night with friends.

The spacious, light-filled bedroom enjoys a southwest exposure and features a double bed, ample built-in storage, and stylish finishes.

The apartment offers a functional bathroom with bath/shower, a separate WC, and plenty of storage throughout. Additional conveniences include a private ski locker, a secure cave for ski/bike equipment, and concierge services are easily arranged for hassle-free rental management.

Soak up the sun on your private balcony, perfectly oriented south and offering panoramic views without any overlooking. The ideal spot for morning coffee or après-ski relaxation.

Set within a charming chalet-style...

LOCAL TAXES

Taxe habitation: EUR

NOTES