

Small hotel/restaurant on a square opposite a medieval church in a village famous for its truffle market

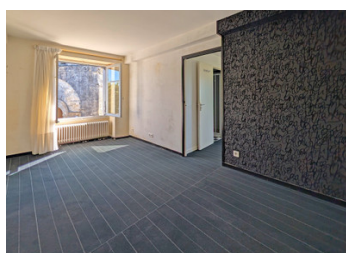
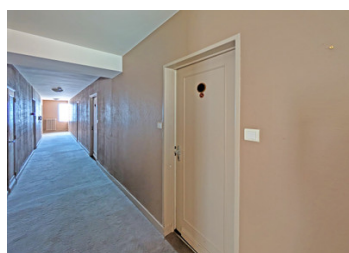
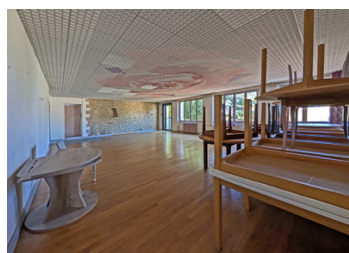


INFORMATION

Town:	Sorges et Ligueux en
Department:	Périgord Dordogne
Bed:	7
Bath:	7
Floor:	348 m2
Plot Size:	369 m2

IN BRIEF

A small hotel/restaurant with 7 guest rooms that either have views over the countryside to the rear or overlook a wonderful medieval church in a pretty village famous for its gastronomy and particularly its truffle market. The interior layout of the hotel is functional with exposed stone features, but it needs redecorating in certain areas. As well as being in a pretty position in the village, it is also on a one-way system for passing trade

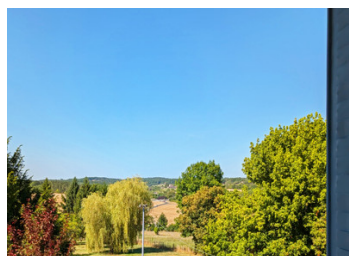
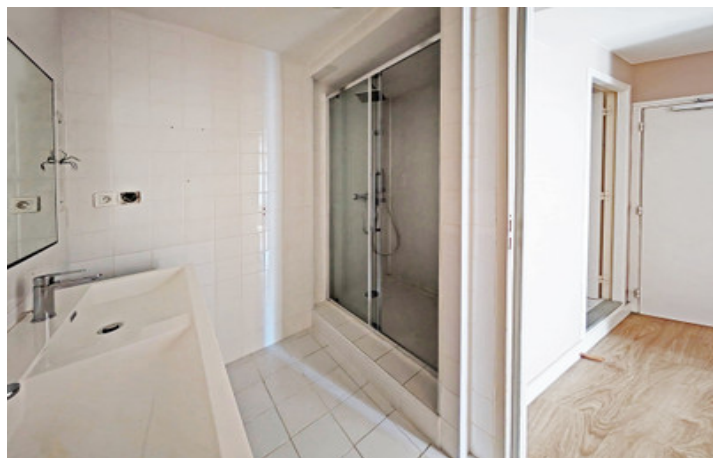


ENERGY - DPE

DPE blank.

NB. Quoted prices relate to euro transactions. Fluctuations in exchange rates are not the responsibility of the agency or those representing it. The agency and its representatives are not authorised to make or give guarantees relating to the property. These particulars do not form part of any contract but are to be taken as a general representation of the property. Any areas, measurements or distances are approximate. Text, photographs and plans, where applicable, are for guidance only. Leggett and its representatives have not tested services, equipment or facilities and cannot guarantee the same.

Particulars for off-plan purchases are intended as a guide only. Final finishes to the property may vary. Purchasers are advised to engage a solicitor to check the plans and specifications as laid out in their purchase contract with the developer.



LOCAL TAXES

Taxe habitation: EUR

NOTES

DESCRIPTION

Ground floor

Reception 23 m²

Bar area 39 m²

Dining room 70 m²

Corridor + office + w/c total 33 m²

Kitchen 50m²

1st Floor

7 Guest rooms + corridor + stairs total 183m²

Outside

Rear courtyard with two garages

Total land 369 m²

Amenities

Local shops 1-3 minutes on foot

Nearest SNCF train station (Thiviers) 15 minutes by car

Nearest supermarket 15 minutes by car

Nearest airport (Limoges) 1 hr 5 minutes by car

Information about risks to which this property is exposed is available on the G  orisques website : <https://www.georisques.gouv.fr>