

Beautifully converted Barn and farmhouse with wonderful gardens in a peaceful hamlet in the Cher



INFORMATION

Town:	Préveranges
Department:	Cher
Bed:	4
Bath:	3
Floor:	245 m2
Plot Size:	3440 m2



IN BRIEF

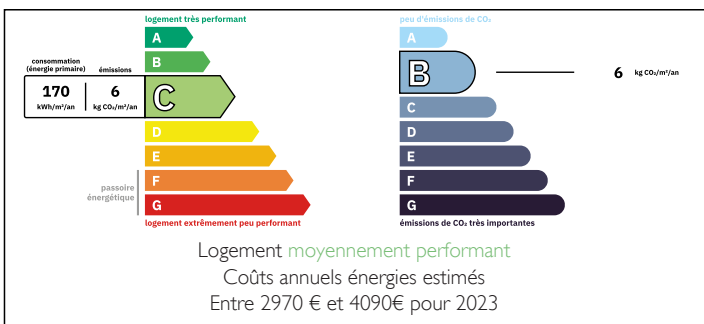
A wonderful stone barn and farmhouse has exposed stone and beams throughout retaining the history of the buildings but with all the modern comforts for a fantastic country home.

In very large mature gardens, this 4 bedroom (1 as a study) property has two very large living spaces, both with wood-burning stoves are ideal for family gatherings and entertaining. The near 70m2 Lounge/Diner has a wonderful open mezzanine above with cathedral style vaulted ceilings above the double aspect barn windows .

The fully equipped kitchen is open plan to the dining room and offers a further near 50m2 space and a further kitchen/laundry room and downstairs WC.

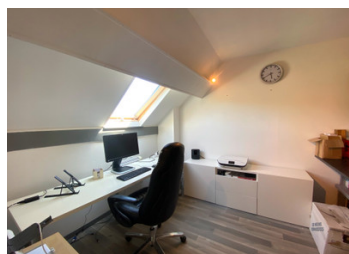
Ideally situated within 2km of Preveranges with some facilities including primary school. The medieval town of Bussac 20 minutes drive,

ENERGY - DPE



NB. Quoted prices relate to euro transactions. Fluctuations in exchange rates are not the responsibility of the agency or those representing it. The agency and its representatives are not authorised to make or give guarantees relating to the property. These particulars do not form part of any contract but are to be taken as a general representation of the property. Any areas, measurements or distances are approximate. Text, photographs and plans, where applicable, are for guidance only. Leggett and its representatives have not tested services, equipment or facilities and cannot guarantee the same.

Particulars for off-plan purchases are intended as a guide only. Final finishes to the property may vary. Purchasers are advised to engage a solicitor to check the plans and specifications as laid out in their purchase contract with the developer.



DESCRIPTION

Entered by an oak porch into a entrance hall with downstairs WC, rear kitchen/laundry room with doors to the rear patio, expansive Lounge/diner complete with woodburning stove which powers the underfloor heating in this side of the house. The Lounge has a double aspect with barn door sized glazing on both aspects and new barn door shutters on the south elevation.

The dining area opens upwards to a cathedral style roof via the mezzanine balcony above. Staircase to upper floor adjacent to the fireplace in the lounge area. This bright and large living space opens at the rear onto a large tiled terrace running the length of the property.

To the right from the hall is an open plan double aspect dining room with a spiral staircase to the upper floor and opening into a fully fitted kitchen with door and windows to the front and useful pantry to the rear.

The upper floor via the spiral staircase has a large master suite with dressing room and 2 ensuite shower rooms (1 with WC). Beyond the dressing room opens up to the upper mezzanine area with a large living space/library a small bedroom/office with Velux to the rear and 2 further bedrooms and a bathroom with WC.

There is a gravel parking area in front of the property which extends to a gated driveway accessed at the side and then wraps around the property beyond the full length raised terrace towards a garage/workshop. To...

LOCAL TAXES

Taxe foncière: **996 EUR**

Taxe habitation: **EUR**

NOTES