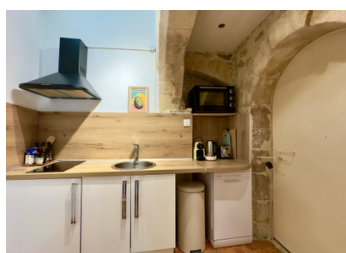


## Authentic Stone Village House with Roof Terrace and Expansion Potential in the Heart of Saint-Rémy



## INFORMATION

Town:	Saint-Rémy-de-Provence
Department:	Bouches-du-Rhône
Bed:	3
Bath:	2
Floor:	112 m <sup>2</sup>
Plot Size:	15 m <sup>2</sup>

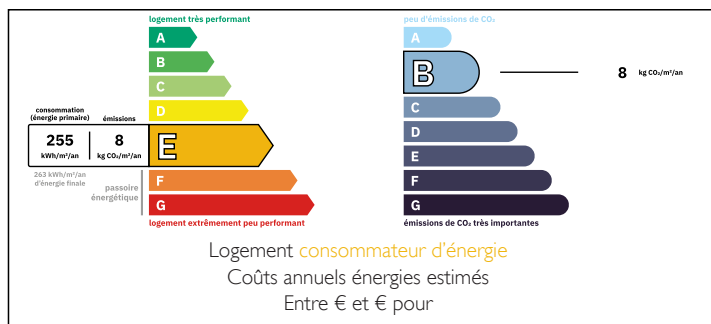


## IN BRIEF

In a quiet corner of the historic centre of Saint-Rémy-de-Provence, this beautifully preserved 18th-century stone townhouse offers 112 m<sup>2</sup> of living space over three levels, crowned by a roof terrace with sweeping views of the village rooftops.

Full of Provençal charm, it features exposed stone walls, terracotta floors, and period fireplaces. The ground floor comprises a light-filled dining area, a renovated kitchen, and a utility room. The first floor offers a large room with a stone fireplace—currently a bedroom but ideal as a living room—a second double bedroom, and a bathroom. The second floor includes a double bedroom, a flexible living space and a bathroom. The top-floor opens onto a roof terrace with panoramic views to the church spire - perfect for morning coffee and fresh croissants or a sunset apéro.

## ENERGY - DPE



## Steps from cafés, boutiques, galleries, markets and all

NB. Quoted prices relate to euro transactions. Fluctuations in exchange rates are not the responsibility of the agency or those representing it. The agency and its representatives are not authorised to make or give guarantees relating to the property. These particulars do not form part of any contract but are to be taken as a general representation of the property. Any areas, measurements or distances are approximate. Text, photographs and plans, where applicable, are for guidance only. Leggett and its representatives have not tested services, equipment or facilities and cannot guarantee the same.

Particulars for off-plan purchases are intended as a guide only. Final finishes to the property may vary. Purchasers are advised to engage a solicitor to check the plans and specifications as laid out in their purchase contract with the developer.



## LOCAL TAXES

Taxe habitation: EUR

## NOTES

## DESCRIPTION

Leggett International - Karen Stride is delighted to offer this beautifully preserved 18th-century stone townhouse, nestled in a serene enclave of the historic centre of Saint-Rémy-de-Provence, offering 112 m<sup>2</sup> of character-filled living space across three levels, crowned by a roof terrace with sweeping views over the village rooftops.

Rich in authentic Provençal charm, the home features exposed stone walls, terracotta floors, and period fireplaces, creating a warm and welcoming atmosphere.

The ground floor opens to a light-filled dining area, flowing into a tastefully renovated kitchen and a practical utility room. On the first floor, a generous room with a striking stone fireplace—currently arranged as a bedroom—could serve equally well as a cosy living room. A second double bedroom and a bathroom with shower, basin, and WC complete this level. The second floor offers a bedroom and an additional flexible living space with TV, ideal as a study, sitting room, or guest bedroom.

At the very top, a small room leads to a generous roof terrace with timber decking – perfect for morning coffee and fresh croissants from the boulangerie, a leisurely lunch from the market's seasonal produce, or a sunset apéro as the church spire of Saint-Rémy glows in the evening light.

Perfectly positioned just steps from cafés, boutiques, art galleries, the weekly markets and all the pleasures of village life.

(An exceptional chance to expand with the adjoining property which is also for sale through our agency. Bought together, the two homes could be combined—rare in Saint-Rémy's historic...