

Elegant 19th-Century Chateau Estate with Parkland and Pool. The Former Summer Retreat of Simone de Beauvoir.



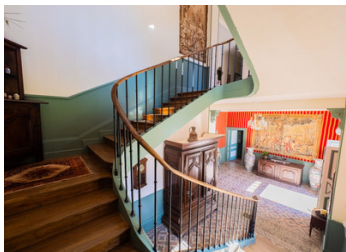
INFORMATION

Town:	Saint-Germain-les-Belles
Department:	Haute-Vienne
Bed:	12
Bath:	7
Floor:	300 m2
Plot Size:	45267 m2

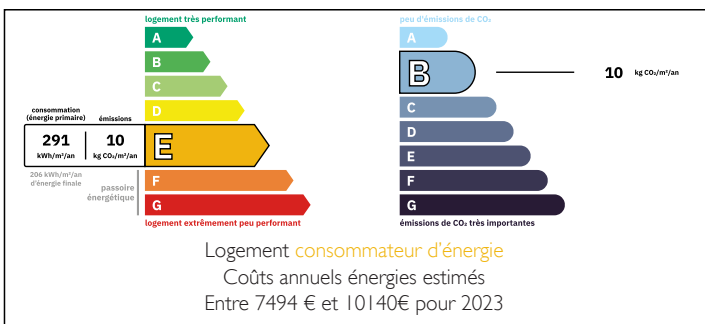


IN BRIEF

Set within over 4.5 hectares of serene, private parkland, this enchanting 19th-century chateau offers a lifestyle of elegance, tranquility, and timeless beauty. Once a summer retreat for Simone de Beauvoir and where Jean-Paul Sartre would visit her, the property carries a quiet intellectual and romantic legacy. A place where history, nature, and refined living come together in perfect harmony. Sold Completely Furnished.

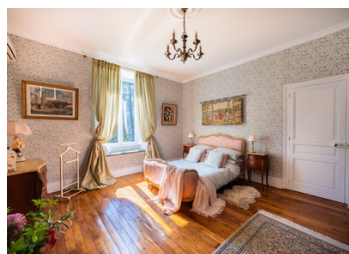


ENERGY - DPE



NB. Quoted prices relate to euro transactions. Fluctuations in exchange rates are not the responsibility of the agency or those representing it. The agency and its representatives are not authorised to make or give guarantees relating to the property. These particulars do not form part of any contract but are to be taken as a general representation of the property. Any areas, measurements or distances are approximate. Text, photographs and plans, where applicable, are for guidance only. Leggett and its representatives have not tested services, equipment or facilities and cannot guarantee the same.

Particulars for off-plan purchases are intended as a guide only. Final finishes to the property may vary. Purchasers are advised to engage a solicitor to check the plans and specifications as laid out in their purchase contract with the developer.



DESCRIPTION

Hidden at the end of a private lane and surrounded by over 4.5 hectares of mature trees and gently unfolding grounds, this elegant 19th-century château feels like a world apart — a place where time slows and the beauty of the French countryside takes centre stage.

Built in 1895, the château has long been a place of retreat, reflection, and inspiration. Its connection to two of France's most celebrated literary figures adds a subtle yet captivating sense of history — the kind that lingers quietly in the atmosphere rather than demands attention.

From the moment you step into the grand entrance hall, there is a feeling of effortless elegance. Sunlight filters across the original tiled floors, while the sweeping staircase draws the eye upward, hinting at the generous volumes and graceful proportions found throughout the home.

The kitchen is both beautiful and inviting — centered around a traditional Lacanche range and a wood-burning fireplace, it is a space made for slow mornings, shared meals, and long conversations. Nearby, the more formal rooms offer a refined contrast: the dining room, with its warm wooden floors and open fireplace, flows seamlessly onto the terrace, where summer evenings stretch late into the night. Two salons, equally elegant, provides a cosy yet sophisticated retreat as the seasons change and are ideally suited to elegant social events.

Upstairs, twelve bedrooms unfold across two floors. The first offers six beautifully finished rooms, four with private en-suites, combining comfort with understated style. The upper...

LOCAL TAXES

Taxe foncière: 2061 EUR

Taxe habitation: EUR

NOTES