

Under offer. A plot of land with a pond and a removable garden shed. The leisure activity of the day.

EXCLUSIVE

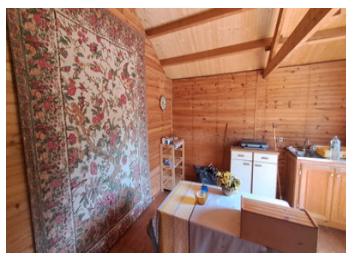


## INFORMATION

Town:	Tinchebray-Bocage
Department:	Orne
Bed:	0
Bath:	0
Floor:	0 m2
Plot Size:	3827 m2

## IN BRIEF

A delightful location and space for many relaxing days fishing in an environment both peaceful and surrounded by trees and nature. The pond currently supports carp and perch. The land is non constructible.



## ENERGY - DPE

DPE not required.

NB. Quoted prices relate to euro transactions. Fluctuations in exchange rates are not the responsibility of the agency or those representing it. The agency and its representatives are not authorised to make or give guarantees relating to the property. These particulars do not form part of any contract but are to be taken as a general representation of the property. Any areas, measurements or distances are approximate. Text, photographs and plans, where applicable, are for guidance only. Leggett and its representatives have not tested services, equipment or facilities and cannot guarantee the same.

Particulars for off-plan purchases are intended as a guide only. Final finishes to the property may vary. Purchasers are advised to engage a solicitor to check the plans and specifications as laid out in their purchase contract with the developer.



## DESCRIPTION

null

-----  
Information about risks to which this property is exposed is available on the G eorisques website : <https://www.georisques.gouv.fr>

## LOCAL TAXES

Taxe habitation: EUR

## NOTES