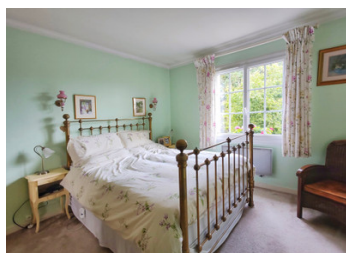
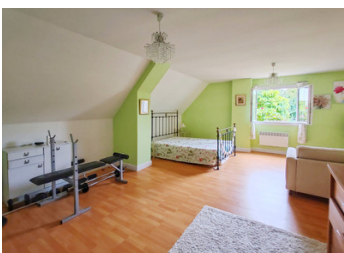


Spacious 5-bedroom Family Home with Breathtaking Views in a Sought-After Village Setting



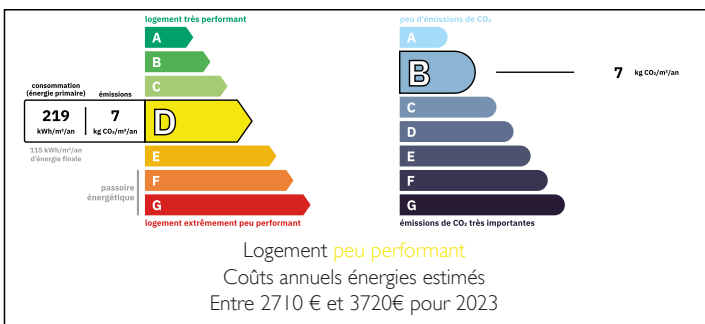
INFORMATION

Town:	Le Grand-Pressigny
Department:	Indre-et-Loire
Bed:	5
Bath:	2
Floor:	185 m ²
Plot Size:	3746 m ²

IN BRIEF

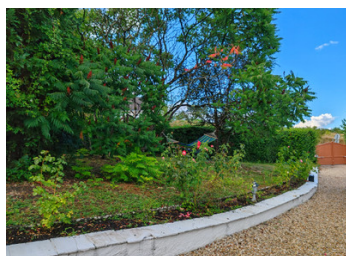
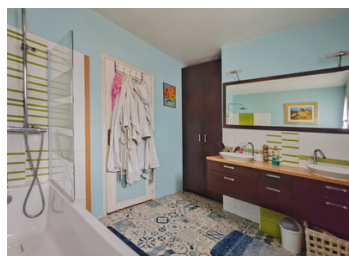
Tucked away on the edge of the vibrant and historic village of Le Grand-Pressigny, this beautifully positioned 5-bedroom home offers the perfect blend of privacy, space, and convenience—ideal for families, remote professionals, or anyone seeking a peaceful lifestyle with excellent amenities close at hand.

ENERGY - DPE



NB. Quoted prices relate to euro transactions. Fluctuations in exchange rates are not the responsibility of the agency or those representing it. The agency and its representatives are not authorised to make or give guarantees relating to the property. These particulars do not form part of any contract but are to be taken as a general representation of the property. Any areas, measurements or distances are approximate. Text, photographs and plans, where applicable, are for guidance only. Leggett and its representatives have not tested services, equipment or facilities and cannot guarantee the same.

Particulars for off-plan purchases are intended as a guide only. Final finishes to the property may vary. Purchasers are advised to engage a solicitor to check the plans and specifications as laid out in their purchase contract with the developer.



DESCRIPTION

Set within nearly an acre of mature, landscaped gardens, the property boasts sweeping panoramic views across the picturesque Claise Valley—rare for a home within walking distance of shops, cafés, and community life.

Accessed via electric gates, a gravelled driveway leads gracefully to a generous 94m² garage/workshop, providing ample space for vehicles, hobbies, or even future conversion. A winding path brings you to the charming terrace with an awning for shade - perfect for al fresco dining - just outside the well-appointed 19m² kitchen, which features fitted units, and space for a central island or breakfast table.

The heart of the home is the light-filled 37m² living/dining room, warmed by a wood-burning stove and offering direct access to the terrace—ideal for entertaining or relaxed family living. Also on the ground floor: two comfortable bedrooms (15m² and 11m², both with built-in storage), a bright office (7m²), a family bathroom with a double vanity and shower-over-bath, and a separate WC.

Upstairs you'll find three additional bedrooms (two around 13m², and a spacious 32m² master bedroom), another bathroom with shower and WC, and three large closets - one of which is ideally suited for conversion into an en suite or walk-in wardrobe.

The full footprint basement includes:

- A vast garage/workshop area (approx. 94m²)
- A separate storage room (17m²)
- A dedicated laundry room (16m²)

Outdoor highlights include:

- A second vehicle entrance—practical for guests or garden access
- A hidden vaulted stone cave nestled in a shady dell—perfect for wine storage or as a unique entertaining space
- Sweeping lawned gardens with mature...

LOCAL TAXES

Taxe habitation: EUR

NOTES