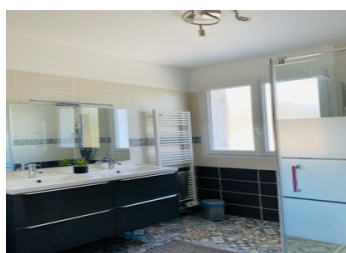
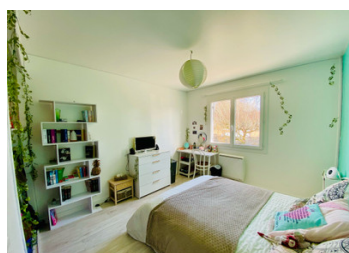
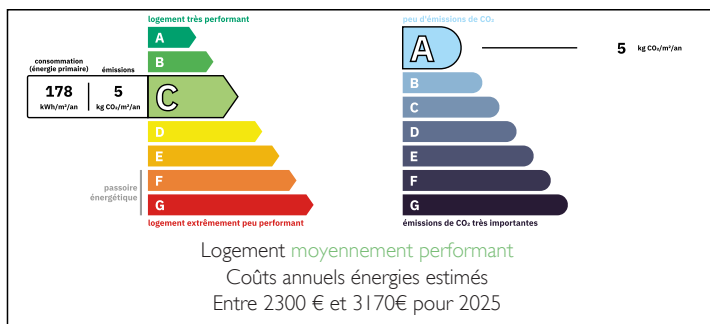


Renovated house close to amenities with garden.

EXCLUSIVE



ENERGY - DPE



## INFORMATION

Town:	Périgueux
Department:	Dordogne
Bed:	6
Bath:	2
Floor:	168 m2
Plot Size:	1213 m2

## IN BRIEF

Large 6-bedroom house in a sought-after area close to amenities.

Great opportunity for this fully renovated house with garden.

The house comprises, on one level, an entrance into a large bright living room with open plan kitchen, pellet stove - 1 master suite with shower room and dressing room, 1 separate wc.

Upstairs: 5 bedrooms, 2 shower rooms, utility room, 1 separate toilet.

Enjoy the private garden with trees, terrace and wood shed.

Pellet stove heating, cast iron electric radiator, double glazing, fibre optics, electric gate.

NB. Quoted prices relate to euro transactions. Fluctuations in exchange rates are not the responsibility of the agency or those representing it. The agency and its representatives are not authorised to make or give guarantees relating to the property. These particulars do not form part of any contract but are to be taken as a general representation of the property. Any areas, measurements or distances are approximate. Text, photographs and plans, where applicable, are for guidance only. Leggett and its representatives have not tested services, equipment or facilities and cannot guarantee the same.

Particulars for off-plan purchases are intended as a guide only. Final finishes to the property may vary. Purchasers are advised to engage a solicitor to check the plans and specifications as laid out in their purchase contract with the developer.



## DESCRIPTION

Large 6-bedroom house in a sought-after area close to amenities.

Great opportunity for this fully renovated house with garden.

The house comprises, on one level, an entrance into a large bright living room with open plan kitchen, pellet stove - 1 master suite with shower room and dressing room, 1 separate wc.

Upstairs: 5 bedrooms, 2 shower rooms, utility room, 1 separate toilet.

Enjoy the private garden with trees, terrace and wood shed.

Pellet stove heating, cast iron electric radiator, double glazing, fibre optics, electric gate.

-----

Information about risks to which this property is exposed is available on the Géorisques website : <https://www.georisques.gouv.fr>

## LOCAL TAXES

**Taxe foncière: 2500 EUR**

**Taxe habitation: EUR**

## NOTES