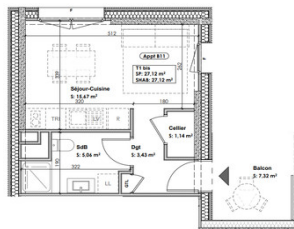


Studio apartment of 27m2 with parking for sale at La Motte Servolex - Chambéry in sought after location



INFORMATION

Town:	La Motte-Servolex
Department:	Savoie
Bed:	0
Bath:	0
Floor:	27 m2
Outside Space:	7 m2

IN BRIEF

A light and airy studio apartment of 27m2 with balcony and parking place for sale in the sought after new Eco village development at La Motte Servolex. A convenient location for Chambéry Technolac, Aix-les-Bains and with easy access to motorways.

This development offers a range of properties from studio to 4 bedrooms - we would be delighted to help you reserve yours now.

ENERGY - DPE

DPE not required.

NB. Quoted prices relate to euro transactions. Fluctuations in exchange rates are not the responsibility of the agency or those representing it. The agency and its representatives are not authorised to make or give guarantees relating to the property. These particulars do not form part of any contract but are to be taken as a general representation of the property. Any areas, measurements or distances are approximate. Text, photographs and plans, where applicable, are for guidance only. Leggett and its representatives have not tested services, equipment or facilities and cannot guarantee the same.

Particulars for off-plan purchases are intended as a guide only. Final finishes to the property may vary. Purchasers are advised to engage a solicitor to check the plans and specifications as laid out in their purchase contract with the developer.

DESCRIPTION

This 1st floor dual aspect studio apartment enjoys all the newbuild benefits of low energy consumption, high speed internet and is in a great location for Technolac and other Chambéry businesses as well as accessible to motorways.

La Motte-Servolex is a picturesque town in the Savoie department of the Auvergne-Rhône-Alpes region in southeastern France. Located near Chambéry and close to the shores of Lake Bourget, it offers a mix of urban life and natural beauty.

With around 12,000 residents, the town stretches across diverse landscapes — from farmland to forests and mountain foothills — ranging in altitude from 230 to 1,440 meters. In 2025, it was ranked one of the top 10 small towns to live in across France, thanks to its strong education offerings, quality of life, and balance between community life and nature.

TRANSPORT/ ACCESS:

By Car

Parc d'activités Savoie Technolac - 4 min.

Motorways A41 and A43 in 8 min.

Chambéry - 15 min.

By train

Station - TER at Viviers-du-Lac - 7 min.

Station TER/TGV d'Aix-les-Bains-Le Revard - à 16 min.

By bus

Bus stop « Pouli » 15 min walk lines A, 300, 301 et 302.

Bus stop « Technolac INSEEC » 15 min walk -lignes I et A.

Airports

Geneva International airport 86km (58 minutes)

Lyon-Saint Exupéry airport - 54 min

THE DEVELOPMENT:

LOCAL TAXES

Taxe habitation: EUR

NOTES