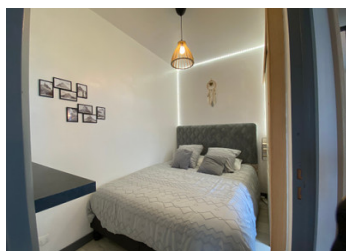


Substantial family home with individual holiday lets overlooking the Mont St Michel



INFORMATION

Town:	Beauvoir
Department:	Manche
Bed:	6
Bath:	4
Floor:	209 m2
Plot Size:	15042 m2



IN BRIEF

This generously proportioned family home comprises, on the ground floor, an entrance hall, living room with fireplace and patio doors out to the garden with views of the Mont St Michel. An open-plan kitchen/dining room with a utility room at the back. Downstairs cloakroom.

On the first floor you have 4 double bedrooms, the Master bedroom having a stunning view of the Mont St Michel. As well as 2 shower rooms with wc. Attic above.

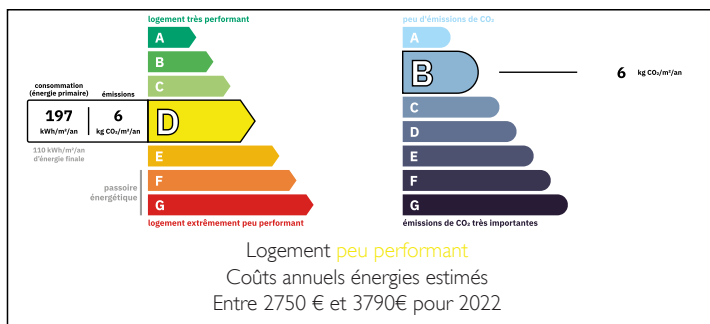
Two studios with their own outside space, newly-renovated and currently rented out as holiday lets.

Undercover parking area.

2 stables, grazing land.

Large stone outbuildings.

ENERGY - DPE



NB. Quoted prices relate to euro transactions. Fluctuations in exchange rates are not the responsibility of the agency or those representing it. The agency and its representatives are not authorised to make or give guarantees relating to the property. These particulars do not form part of any contract but are to be taken as a general representation of the property. Any areas, measurements or distances are approximate. Text, photographs and plans, where applicable, are for guidance only. Leggett and its representatives have not tested services, equipment or facilities and cannot guarantee the same.

Particulars for off-plan purchases are intended as a guide only. Final finishes to the property may vary. Purchasers are advised to engage a solicitor to check the plans and specifications as laid out in their purchase contract with the developer.



DESCRIPTION

null

Information about risks to which this property is exposed is available on the Géorisques website : <https://www.georisques.gouv.fr>

LOCAL TAXES

Taxe habitation: EUR

NOTES