

Grues, Stone house 3 rooms 75 m with independent studio 16 m , both apartments have their own terrace.

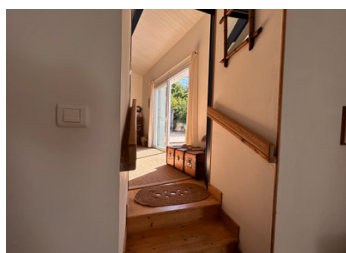
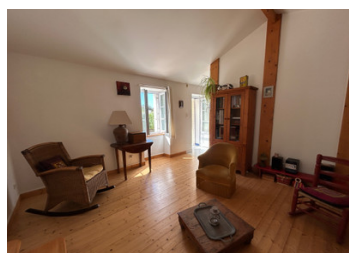


INFORMATION

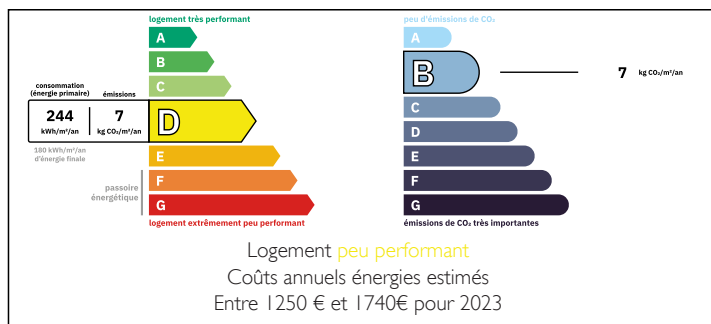
Town:	Grues
Department:	Vendée
Bed:	2
Bath:	2
Floor:	91 m ²
Plot Size:	387 m ²

IN BRIEF

10 minutes from the beaches of the Vendée, 20 minutes from Luçon, located in the heart of the village of Grues (local shops), come and discover this charming stone house built in 1949 with 91 m² of living space, 387 m² of land and a raised garden with a magnificent view over the village. It currently features: a small veranda opening onto the fitted kitchen, also equipped with a wood-burning stove. A living room, followed by a bedroom with mezzanine, a study and a shower room with WC. The house also offers an independent bedroom with shower room. Outside, there's a pretty wooden terrace and a wooden garden shed.



ENERGY - DPE



NB. Quoted prices relate to euro transactions. Fluctuations in exchange rates are not the responsibility of the agency or those representing it. The agency and its representatives are not authorised to make or give guarantees relating to the property. These particulars do not form part of any contract but are to be taken as a general representation of the property. Any areas, measurements or distances are approximate. Text, photographs and plans, where applicable, are for guidance only. Leggett and its representatives have not tested services, equipment or facilities and cannot guarantee the same.

Particulars for off-plan purchases are intended as a guide only. Final finishes to the property may vary. Purchasers are advised to engage a solicitor to check the plans and specifications as laid out in their purchase contract with the developer.



DESCRIPTION

Approximate data in m² :

kitchen: 17m²
living room: 16m²
study: 8m²
bedroom 1 mezzanine: 10m²
bedroom 2: 12m²
shower room 1: 8m²
shower room 2: 2m²
terrace with awning: 12m²
independent building: 10m²
cupboard storage
Scellier boiler room

well and outside tap
granite slab terrace
veranda
wood-burning stove
main drains

Information about risks to which this property is exposed is available on the Géorisques website : <https://www.georisques.gouv.fr>

LOCAL TAXES

Taxe foncière: 500 EUR

Taxe habitation: EUR

NOTES