

Detached 4 bedrooms home on a large plot of land with detached garage and a barn



INFORMATION

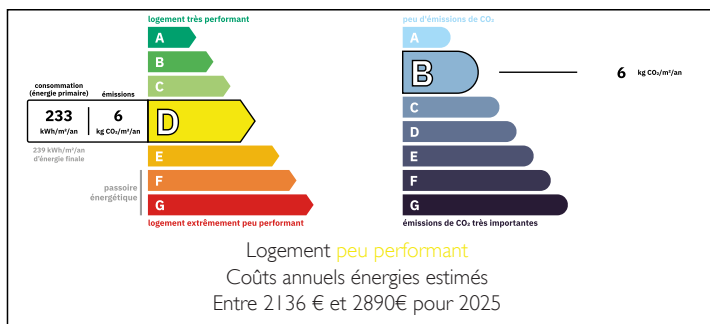
Town:	Vaulry
Department:	Haute-Vienne
Bed:	4
Bath:	2
Floor:	130 m2
Plot Size:	57161 m2



IN BRIEF

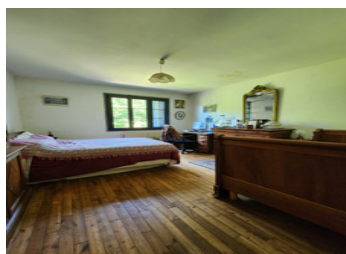
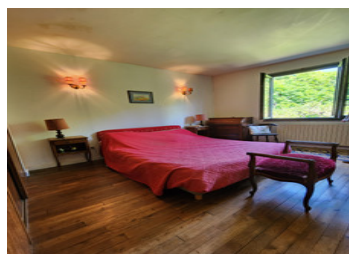
Located on the edge of the pretty village of Vaulry, this house is move-in ready. There are 4 bedrooms, lounge, kitchen, 2 bathrooms, making it an ideal family home. The garage has an upper level that can be converted to living spaces. The barn has a bread oven attached. The large plot includes, a pond, prairie, terrace, chicken coop, fruit trees. The house benefits from double-glazing throughout and a septic tank system. Potential of converting attic and utility room to 2 more bedrooms. The location is peaceful with easy access to the town of Bellac. It is also 25 minutes away from the international airport of Limoges.

ENERGY - DPE



NB. Quoted prices relate to euro transactions. Fluctuations in exchange rates are not the responsibility of the agency or those representing it. The agency and its representatives are not authorised to make or give guarantees relating to the property. These particulars do not form part of any contract but are to be taken as a general representation of the property. Any areas, measurements or distances are approximate. Text, photographs and plans, where applicable, are for guidance only. Leggett and its representatives have not tested services, equipment or facilities and cannot guarantee the same.

Particulars for off-plan purchases are intended as a guide only. Final finishes to the property may vary. Purchasers are advised to engage a solicitor to check the plans and specifications as laid out in their purchase contract with the developer.



DESCRIPTION

Floor plans available upon request

Ground floor :

Tiled Lounge : 23 m2

Bedroom : 15 m2

Tiled Bathroom : 5 m2

Tiled Kitchen : 12 m2

Utility room : 18 m2

First floor : wood floor throughout

Bedroom : 17.5 m2

Bedroom : 17 m2

Bedroom : 16.5 m2

Bathroom : 5 m2

Attic : 20 m2 can easily be converted to a bedroom.

LOCAL TAXES

Taxe foncière: 1119 EUR

Taxe habitation: EUR

Information about risks to which this property is exposed is available on the Géorisques website : <https://www.georisques.gouv.fr>

NOTES