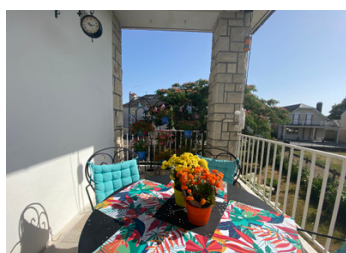
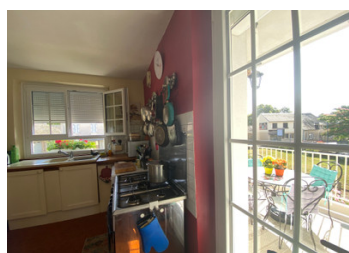
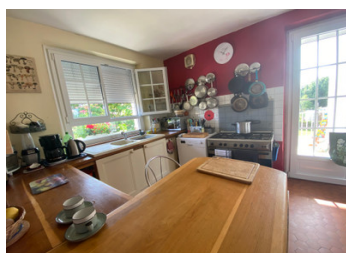


Spacious 4bed/2bath house, possibility to create separate studio. Garden of 1,2 acres+garage/workshop.



INFORMATION

| | |
|-------------|---------|
| Town: | Troche |
| Department: | Corrèze |
| Bed: | 4 |
| Bath: | 2 |
| Floor: | 122 m2 |
| Plot Size: | 5159 m2 |



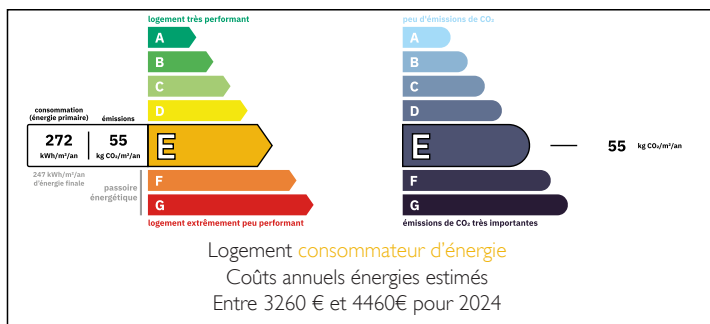
IN BRIEF

Lovely house: Stone steps up to the entrance, hall, kitchen with balcony to the left, sitting/dining room with log burner at the back with french doors to the large terrace.

To the right two double bedrooms, a bathroom (shower) and a separate toilet.

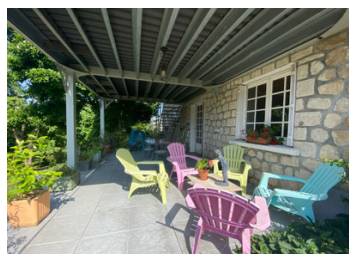
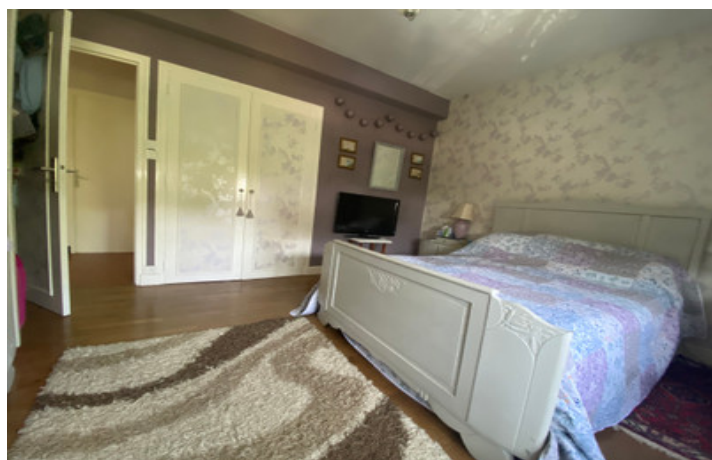
Upstairs: Two double bedrooms with adjacent insulated storage space, bathroom with toilet. Sous-sol: garage, boiler room, laundry room, "under-the-steps" storage space, a large room with french doors to the terrace and garden, a separate room (sowing room) with access to the garden, cellar. Outside: large workshop/garage over two levels with private parking in front and next to it. Large garden with mature trees and shrubs. Well.

ENERGY - DPE



NB. Quoted prices relate to euro transactions. Fluctuations in exchange rates are not the responsibility of the agency or those representing it. The agency and its representatives are not authorised to make or give guarantees relating to the property. These particulars do not form part of any contract but are to be taken as a general representation of the property. Any areas, measurements or distances are approximate. Text, photographs and plans, where applicable, are for guidance only. Leggett and its representatives have not tested services, equipment or facilities and cannot guarantee the same.

Particulars for off-plan purchases are intended as a guide only. Final finishes to the property may vary. Purchasers are advised to engage a solicitor to check the plans and specifications as laid out in their purchase contract with the developer.



LOCAL TAXES

Taxe habitation: EUR

NOTES

DESCRIPTION

This wonderful property can be a spacious family home with an independent studio on the ground floor for extra income or an apartment for (grand)parents. The house has recently got double glazing and electric shutters. The large living room with french doors to the beautiful terrace offers a lovely view over the countryside behind the house. The equipped kitchen has its own balcony to enjoy a morning coffee.

There are two double bedrooms on the living floor as well as a bathroom (shower, bidet, washbasin) and a separate toilet. Upstairs are two more bedrooms and a bathroom (bath, washbasin, toilet) and each bedroom has extra storage space which can even be used to make the room bigger or to have a proper ensuite.

The basics for the studio are there: A large living area which could have the kitchen in it, too, french doors to the terrace and garden, a bedroom (or two, or three) just as you see fit. It is now used as a summer kitchen.

The large flat garden is well-maintained and offers mature trees, fruit trees and shrubs. There even is a well. The workshop is a great space to for example help delicate plants through winter or start a (new) hobby like pottery, mechanics, start a nursery or maybe painting in your own exhibition hall. It even has two levels and parking space in front or at the side..

Troche is a village in between Vigeois and Pompadour, from which the last...