

Stunning Alpage just a few metres from a ski lift in the heart of Sainte Foy Ski resort



INFORMATION

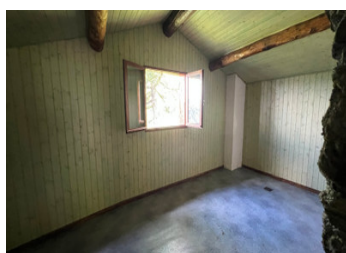
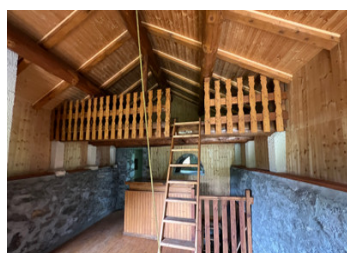
| | |
|-------------|-----------------------|
| Town: | Sainte-Foy-Tarentaise |
| Department: | Savoie |
| Bed: | 0 |
| Bath: | 1 |
| Floor: | 0 m2 |
| Plot Size: | 172 m2 |

IN BRIEF

A Rare Opportunity in the heart Sainte Foy ski station.

This stunning Alpage is one of just four traditional properties forming a charming hamlet right in the centre of the ski resort—offering a truly magical location with panoramic mountain views. In summer, access is straightforward with a 4x4 vehicle reaching the chalet directly. In winter, you can either walk the short 200 metres from the top of the chairlift or ski straight down to the door, making it remarkably accessible year-round.

The structure is already sound, with concrete floors in place and a bathroom installed—providing a solid foundation for further development. The property also holds excellent potential for use as a boutique restaurant, offering a unique and intimate setting with breathtaking views and a prime location.



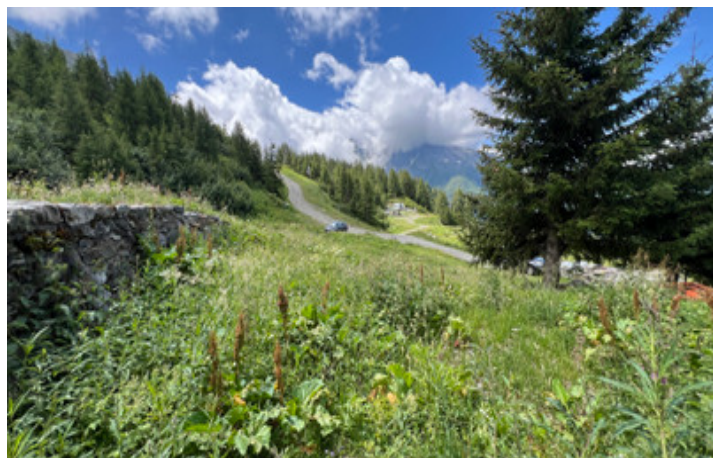
ENERGY - DPE

DPE not required.

What makes this Alpage particularly special is its

NB. Quoted prices relate to euro transactions. Fluctuations in exchange rates are not the responsibility of the agency or those representing it. The agency and its representatives are not authorised to make or give guarantees relating to the property. These particulars do not form part of any contract but are to be taken as a general representation of the property. Any areas, measurements or distances are approximate. Text, photographs and plans, where applicable, are for guidance only. Leggett and its representatives have not tested services, equipment or facilities and cannot guarantee the same.

Particulars for off-plan purchases are intended as a guide only. Final finishes to the property may vary. Purchasers are advised to engage a solicitor to check the plans and specifications as laid out in their purchase contract with the developer.



LOCAL TAXES

Taxe habitation: EUR

NOTES

DESCRIPTION

The Alpage can be accessed in summer 4x4 recommended

In winter you can walk the 400 m from the chairlift , or you could ski down.

Please note Alpages are not authorised as dwellings , whilst you can sleep there in the summer months it is not permitted to use as an accommodation in the winter .

The Alpage is one of 4 chalets situated in the L'arpettaz area,

Entry level with 2 connected rooms and a cave , a small kitchen island is in place . There is a mezzanine which would make a cosy sleeping area.

There is also a space to install a stove / fireplace
Stairs lead to a lower level with an additional room that opens out onto a courtyard protected from the elements . There is also a very basic shower room with sink and WC.

Secure doors and windows are in place, and there is basic insulation and concrete levels in place. Whilst there is evidently work to do to make it into a magical hideaway , the structure and envelope of the building is in place.

Tucked away in the Upper Tarentaise valley, Sainte Foy Tarentaise is a boutique alpine resort that has earned a loyal following for its authenticity, charm, and exceptional off-piste skiing. Often referred to as a "hidden gem," it offers a quieter, more exclusive experience than its larger neighbours, yet with access to world-class terrain and excellent natural snowfall thanks to...