

Newbuild turnkey chalet, 15-40 mins to Val d'Isere, Tignes, Lea Arcs, Sainte Foy Tarentaise, or La Rosiere.



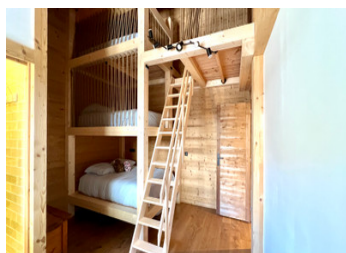
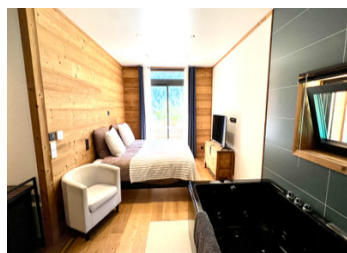
INFORMATION

Town:	Séez
Department:	Savoie
Bed:	4
Bath:	4
Floor:	178 m2
Plot Size:	653 m2

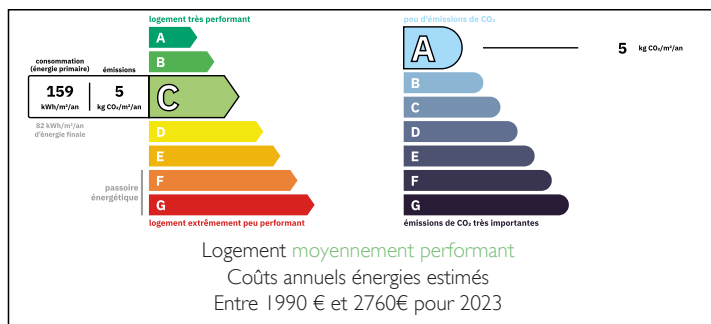
IN BRIEF

This stunning house has with a surface area of over 250m has been recently constructed by local artisans with a modern and stylish finish. Perfect for either family living or a second home with great rental potential .

Complete with 4 good sized ensuite bedrooms , plus additional rooms such as an office and TV snug which could be used for extra guests. One of the rooms has ben purpose built for kids with 3 stacked double beds and a rope mezzanine. The property comes with an inside garage as well as a laundry room. The house sits on the edge of the popular year round village of Seez on the sunny side of the valley. The ski stations of Val d'Isere, Tignes, La Roisere, Sainte Foy Tarentaise and Villaroger / Les Arcs...

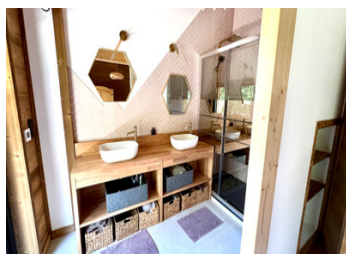


ENERGY - DPE



NB. Quoted prices relate to euro transactions. Fluctuations in exchange rates are not the responsibility of the agency or those representing it. The agency and its representatives are not authorised to make or give guarantees relating to the property. These particulars do not form part of any contract but are to be taken as a general representation of the property. Any areas, measurements or distances are approximate. Text, photographs and plans, where applicable, are for guidance only. Leggett and its representatives have not tested services, equipment or facilities and cannot guarantee the same.

Particulars for off-plan purchases are intended as a guide only. Final finishes to the property may vary. Purchasers are advised to engage a solicitor to check the plans and specifications as laid out in their purchase contract with the developer.



LOCAL TAXES

Taxe habitation: EUR

NOTES

DESCRIPTION

The house was constructed between 2023 and 2024, with a lovely mix of natural material as well as modern fixtures and finishes.

The surface area of the house is over 250m

The habitable space of 178m is laid out as follows

Garages

Ground floor entrance level

Porch / Entry 5.83m²

Kitchen 45.59m²

Storage rooms of 7.52 m² and 2.26m²

Wc 0.84m²

Master bedroom with bathroom corner 21.61m²

Laundry room 6.37m²

First floor

Storage 6.7m²

Bedroom 2 with shower room 17.47m²

Additional room 9.16m²

Bedroom 3 with en suite bathroom 20.34m²

Bedroom 4 with en suite shower 18.37m²

WC 1.18m²

TV room 11.77m²

There is a 69 m²

terrace overlooking the garden where fast growing laurel has been planted in order to provide more privacy. There are 2 balconies of m² 7.09m²

The Garden is a mix of constructible and non constructible land has a boules area as well as space for a spa or pool. The land surrounding and below the house is farmland and the mountain view is stunning.

The house is sold fully furnished with high quality appliances even down to the garden furniture.

There are 2 separate hot water tanks in the event the house is under occupied. Underfloor heating , wood boiler as well as the latest norms in terms of