

## Unique Large Piste side SKI Apartment For Sale in Ste Foy, Parking, Sun Terrace, Stunning Mountain Views



## INFORMATION

Town:	Sainte-Foy-Tarentaise
Department:	Savoie
Bed:	1
Bath:	1
Floor:	63 m2
Outside Space:	15 m2



## IN BRIEF

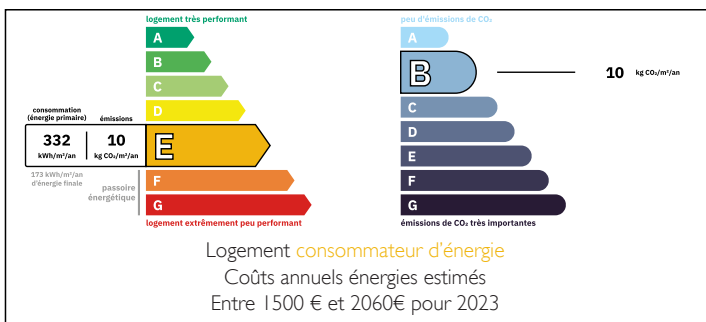
Located in the heart of the Bataillette area of Sainte Foy Tarentaise a Large traditional Savoyarde style 1-bedroom apartment comprising an open plan living room with stone built fireplace and log burner, a fully equipped kitchen with island, a dining area with mountain views, a double bedroom with terrace to the north and a large bathroom.

The living room leads out to a south facing terrace with direct access to the piste "Ski in" and fabulous mountain views .

The apartment is currently laid out with one large master bedroom. Architects plans are available to add a second bedroom if required.

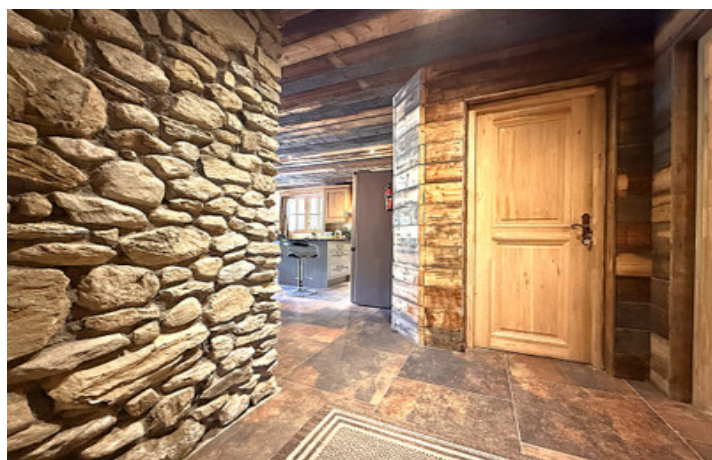
The apartment benefits from a large underground secure parking space and on site Spa Facilities.

## ENERGY - DPE



NB. Quoted prices relate to euro transactions. Fluctuations in exchange rates are not the responsibility of the agency or those representing it. The agency and its representatives are not authorised to make or give guarantees relating to the property. These particulars do not form part of any contract but are to be taken as a general representation of the property. Any areas, measurements or distances are approximate. Text, photographs and plans, where applicable, are for guidance only. Leggett and its representatives have not tested services, equipment or facilities and cannot guarantee the same.

Particulars for off-plan purchases are intended as a guide only. Final finishes to the property may vary. Purchasers are advised to engage a solicitor to check the plans and specifications as laid out in their purchase contract with the developer.



## LOCAL TAXES

Taxe habitation: EUR

## NOTES

## DESCRIPTION

This very spacious apartment (63.62m<sup>2</sup>) is located in the Bataillette sector of the family friendly ski resort Sainte Foy Tarentaise.

Built in 2011, the property comprises 1 large bedroom (16.73m<sup>2</sup>) with traditional pine hand built fitted wardrobes and character wooden beams. Stylish French patio doors lead out to a balcony enjoying fantastic views down the valley and across to the Cornet de la Roseland and surrounding mountains.

The sizeable open plan living area offers alpine charm with an impressive stone built fireplace taking centre stage, with its aged wood surround and log burner.

2 sets of French patio doors lead out onto the large south facing terrace which has breathtaking views of Mount Pourri straight ahead, the return from Les Charmettes piste from the East and the Aiguille Rouge (the summit of Les Arcs Ski Resort) to the west.

Entering on the ground floor into the hallway with character stone floor tiles, traditional wood walls and downlighters. The stone tiles continue into the impressive L shaped, fully equipped kitchen area which has a Belfast sink, dishwasher, washing machine, fridge freezer, pine units and a fabulous island with a large granite type worksurface and cupboards / drawers below. There is a west facing window in the open plan dining area with views down the valley. Wall lights and chunky beams in the ceiling add to the cosy "alpine chalet feel".

To the right of the entrance hallway, you will find the large fully tiled...