

Immaculate two bedroom house with lovely garden in the heart of a pretty French village.



INFORMATION

Town:	La Chapelle-Montbrandeix
Department:	Haute-Vienne
Bed:	2
Bath:	1
Floor:	60 m2
Plot Size:	1 133 m2

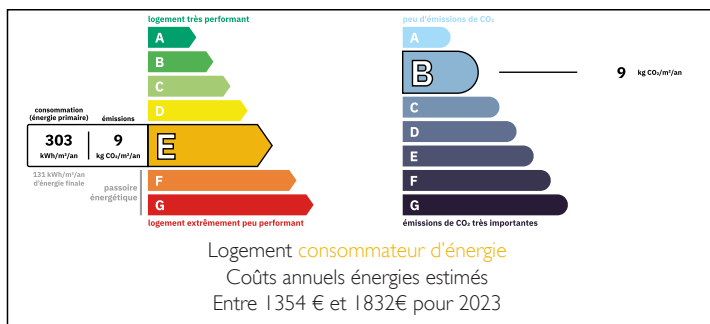


IN BRIEF

Immaculately presented village house, walking distance to two restaurants and arranged on one floor

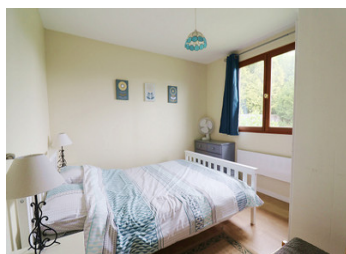


ENERGY - DPE



NB. Quoted prices relate to euro transactions. Fluctuations in exchange rates are not the responsibility of the agency or those representing it. The agency and its representatives are not authorised to make or give guarantees relating to the property. These particulars do not form part of any contract but are to be taken as a general representation of the property. Any areas, measurements or distances are approximate. Text, photographs and plans, where applicable, are for guidance only. Leggett and its representatives have not tested services, equipment or facilities and cannot guarantee the same.

Particulars for off-plan purchases are intended as a guide only. Final finishes to the property may vary. Purchasers are advised to engage a solicitor to check the plans and specifications as laid out in their purchase contract with the developer.



DESCRIPTION

This house is immaculately presented and sits at the heart of this pretty French village, with two restaurants within walking distance this is an ideal situation for countryside living

The house is arranged on one floor - to the left of the property as you walk in a fitted kitchen, behind that a bedroom, to the right of the bedroom is a shower room with washing machine and to the right of that is another double bedroom.

On the right hand side of the property is a large living room with double doors out onto the terrace at the front of the house overlooking the gorgeous French countryside.

Wrapped around the house is a sizeable garden mainly laid to lawn with some mature shrubs and trees.

All in all great value and definitely worth seeing.

LOCAL TAXES

Taxe habitation: EUR

Information about risks to which this property is exposed is available on the Géorisques website : <https://www.georisques.gouv.fr>

NOTES