

Unique townhouse in Montmoreau with striking interior design – bursting with character and instantly liveable.



## INFORMATION

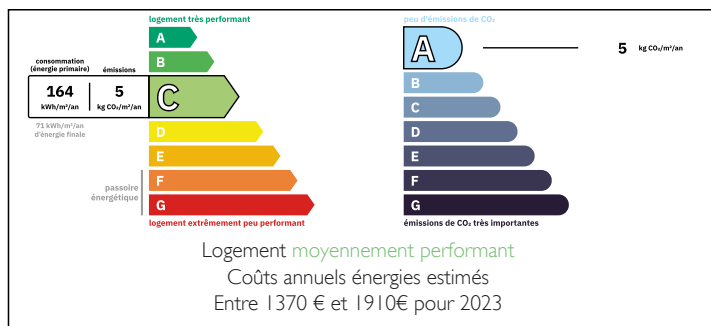
Town:	Montmoreau
Department:	Charente
Bed:	3
Bath:	1
Floor:	107 m2
Plot Size:	139 m2

## IN BRIEF

This distinctive 3-bedroom townhouse near the château in Montmoreau blends 19th-century charm with dramatic interior styling. Renovated throughout, with a bright living space, sun terrace and garden, it's ready to move into.

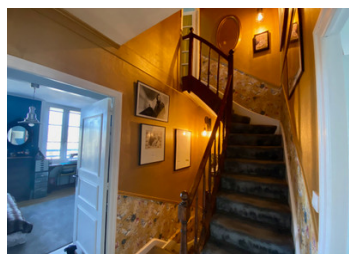


## ENERGY - DPE



NB. Quoted prices relate to euro transactions. Fluctuations in exchange rates are not the responsibility of the agency or those representing it. The agency and its representatives are not authorised to make or give guarantees relating to the property. These particulars do not form part of any contract but are to be taken as a general representation of the property. Any areas, measurements or distances are approximate. Text, photographs and plans, where applicable, are for guidance only. Leggett and its representatives have not tested services, equipment or facilities and cannot guarantee the same.

Particulars for off-plan purchases are intended as a guide only. Final finishes to the property may vary. Purchasers are advised to engage a solicitor to check the plans and specifications as laid out in their purchase contract with the developer.



## LOCAL TAXES

Taxe habitation: EUR

## NOTES

## DESCRIPTION

Built in 1850 and fully renovated in 2020/21, this beautifully presented townhouse is set in Montmoreau's historic quarter, right beside the château grounds. Featuring a flamboyant and bold maximalist interior style, this property is full of personality and charm – the perfect blend of old-world architecture and eclectic contemporary flair.

The 115 m<sup>2</sup> of living space is set over four levels. On the main floor, the striking open-plan lounge/dining room (26 m<sup>2</sup>) boasts vibrant wallpaper, rich colour palettes, velvet seating, vintage accents and large windows that flood the space with light. It evokes the feel of a Parisian apartment overlooking a leafy square – a rare find in this peaceful Charentais town.

The kitchen (6.5 m<sup>2</sup>) is fully equipped and opens onto a raised terrace (12 m<sup>2</sup>) with steps leading to a charming garden with gravel seating and a small pond – ideal for morning coffee or evening drinks.

The home offers three bedrooms: a spacious top-floor suite with cathedral ceiling, exposed beams and dressing area (a true 'wow' room), plus two further bedrooms (16 m<sup>2</sup> and 7.8 m<sup>2</sup>), one currently used as an office. A stylish bathroom, separate WC, and practical pantry complete the upper levels.

The ground floor hallway features decorative tiled flooring and bold artwork, creating a dramatic and welcoming entry. The garage has been modified to add a 17 m<sup>2</sup> utility/storage room, with space at the front for a small car. Parking is also available directly in front of the house.

Additional features include: heat...