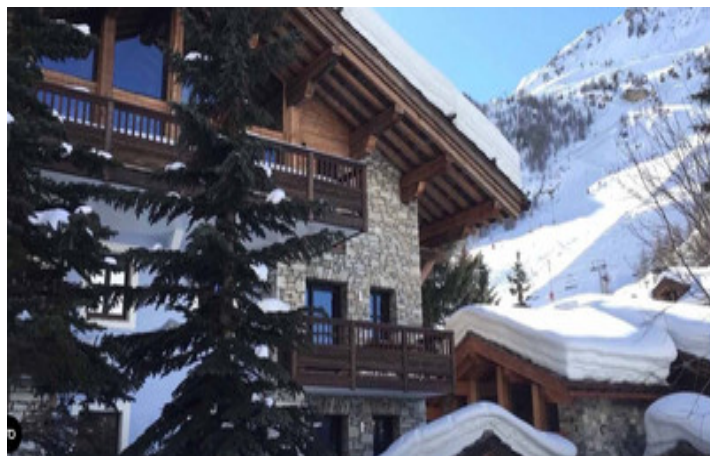


2 bedroom Apartment for sale 100m from the snow front in the centre of Val d'Isere - opportunity to rental



INFORMATION

Town:	Val-d'Isère
Department:	Savoie
Bed:	2
Bath:	2
Floor:	77 m2
Outside Space:	13 m2

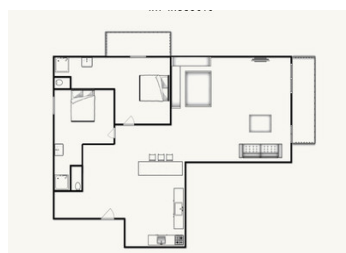
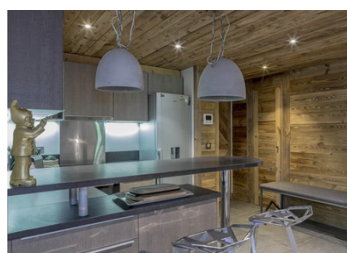
IN BRIEF

It is rare to find an apartment so close to the snow front in this iconic resort for sale .

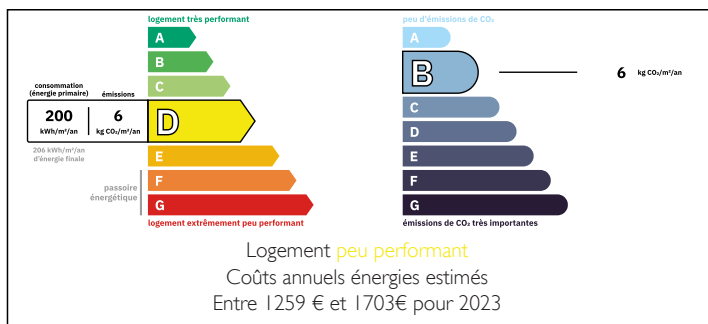
Located In a small residence this ground floor 2 bedroom 2 bathroom flat is turnkey ready to use . Complete with an underground garage as 2 outside terraces , this really is a rare gem in prime position. The other apartments in the building are a mix of personal and properties operated by one of val d'Isere's most well known and respected tour operators. Figures are available showing rental yields for this and similar apartments.

Great for a mix of personal and rental use , or as a rental investment opportunity.

This apartment will sell quickly so be sure to book a video viewing.



ENERGY - DPE



NB. Quoted prices relate to euro transactions. Fluctuations in exchange rates are not the responsibility of the agency or those representing it. The agency and its representatives are not authorised to make or give guarantees relating to the property. These particulars do not form part of any contract but are to be taken as a general representation of the property. Any areas, measurements or distances are approximate. Text, photographs and plans, where applicable, are for guidance only. Leggett and its representatives have not tested services, equipment or facilities and cannot guarantee the same.

Particulars for off-plan purchases are intended as a guide only. Final finishes to the property may vary. Purchasers are advised to engage a solicitor to check the plans and specifications as laid out in their purchase contract with the developer.



LOCAL TAXES

Taxe foncière:	2612 EUR
Taxe habitation:	EUR

NOTES

DESCRIPTION

The apartment is located less than 100 metres from the snow front in the area of the Face / Bellvarde lift .

It's is on the ground floor so benefits from 2 outside terraces

Entry in with 2 bedroom and shower rooms with separate WCs

An nice open plan living dining area

Drive in large garage, complete with utility are and boot warmers. This could fit 2 small or 1 large car . The underground car parking le face is also very close.

The dimensions are as follows

Kitchen 14.23 m²

Storage 1.41 m²

Bedroom 1 10.75 m²

Showroom 2.9 m²

WC 0.85 m²

Bedroom 2. 13.44 m²

Showroom 3.00 m²

WC 0.83 m²

Lounge 29.60 m²

Technical room 0.150 m²

Terraces 8.3 m² 4.6 m²

Val d'Isère is one of the most prestigious and in-demand ski resorts in the French Alps, offering a rare combination of altitude, charm, and consistent snow conditions. Situated at 1,850 meters, with access to the vast Tignes–Val d'Isère ski area (formerly Espace Killy), it boasts over 300 km of slopes and one of the longest winter seasons in Europe, running from early December to early May. This makes it particularly attractive to both lifestyle buyers and investors seeking reliable rental returns.

Property in Val d'Isère commands some of the highest prices in the Alps. Prices typically range from €18,000 to over €42 000 per square metre for prime locations, and can climb...