

Spacious 5-bedroom home near sea, schools & port with large garden and double garage. In need of modernisation

EXCLUSIVE



INFORMATION

Town:	Penmarch
Department:	Finistère
Bed:	5
Bath:	2
Floor:	103 m2
Plot Size:	1186 m2

IN BRIEF

Spacious 5-Bedroom Family Home Near Beach, Port & School – Large Plot with Double Garage
Located just 250 metres from the sea and conveniently close to local schools and amenities, this generously sized family home offers great potential in a highly desirable coastal setting.

Property Features:

Ground Floor:

Entrance hall

Kitchen

Living room

Bathroom & separate WC

Two bedrooms

First Floor:

Three additional bedrooms

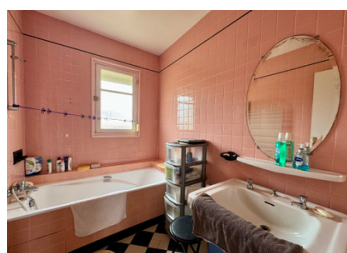
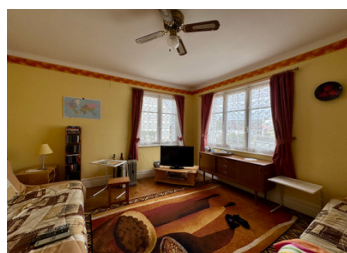
Bathroom & WC

Exterior:

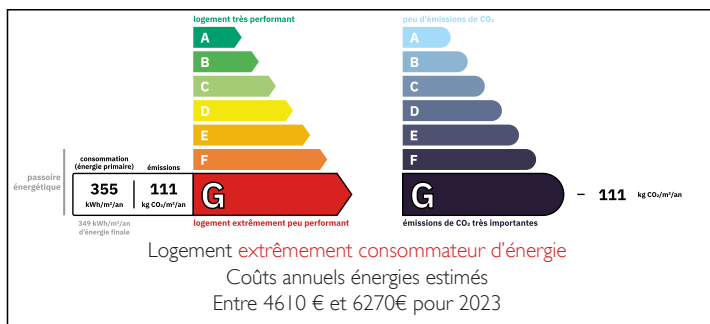
Large garden offering space to relax or develop

Double garage

Shed



ENERGY - DPE



NB. Quoted prices relate to euro transactions. Fluctuations in exchange rates are not the responsibility of the agency or those representing it. The agency and its representatives are not authorised to make or give guarantees relating to the property. These particulars do not form part of any contract but are to be taken as a general representation of the property. Any areas, measurements or distances are approximate. Text, photographs and plans, where applicable, are for guidance only. Leggett and its representatives have not tested services, equipment or facilities and cannot guarantee the same.

Particulars for off-plan purchases are intended as a guide only. Final finishes to the property may vary. Purchasers are advised to engage a solicitor to check the plans and specifications as laid out in their purchase contract with the developer.



DESCRIPTION

Proximity to the Sea

Located just 250 m from the beach, perfect for seaside living and daily coastal walks.

Spacious layout ideal for family

Five bedrooms, two bathrooms, and generous living areas—ideal for a large or growing family.

Convenient Location

Close to schools, the port, and local amenities, offering practicality for everyday life.

Ample Outdoor Space

Set on a large plot with a garden, double garage, and shed—great for outdoor activities and storage.

Move-In Ready Potential

Well-laid out home with scope to personalise or update to your taste in a highly desirable area.

LOCAL TAXES

Taxe habitation: EUR

Information about risks to which this property is exposed is available on the Géorisques website : <https://www.georisques.gouv.fr>

NOTES