

Peaceful 17th Century riverside manor with 3 additional houses, outbuildings, land and woods near Castres



INFORMATION

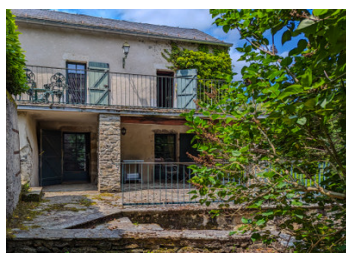
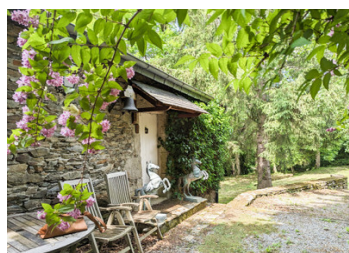
Town:	Castres
Department:	Tarn
Bed:	12
Bath:	9
Floor:	1088 m2
Plot Size:	550000 m2

IN BRIEF

This magnificent country manor in a beautiful riverside setting offers tons of possibilities. Located a short drive from Castres and just outside the village of Brassac, the property sits surrounded by mature woodland and gardens beside the Agout river. The main house boasts generous living spaces, five bedrooms, four bathrooms, an office, a library, a sauna and a wine cellar. It is packed full of historic character, with its granite staircase, 95m2 ballroom and high ceilings all contributing to its charm.

Across the garden from the main house are two separate properties which would be perfect for guests, to rent out or staff accommodation. A third house is a short walk away and would be ideal to use as a gîte or a private family home.

Surrounding the main house are over 55 hectares of woods and land as...



ENERGY - DPE

DPE blank.

NB. Quoted prices relate to euro transactions. Fluctuations in exchange rates are not the responsibility of the agency or those representing it. The agency and its representatives are not authorised to make or give guarantees relating to the property. These particulars do not form part of any contract but are to be taken as a general representation of the property. Any areas, measurements or distances are approximate. Text, photographs and plans, where applicable, are for guidance only. Leggett and its representatives have not tested services, equipment or facilities and cannot guarantee the same.

Particulars for off-plan purchases are intended as a guide only. Final finishes to the property may vary. Purchasers are advised to engage a solicitor to check the plans and specifications as laid out in their purchase contract with the developer.



DESCRIPTION

A winding private drive leads through the woods to this stunning property. The main building has elements dating from the 17th century and has a striking profile with its distinctive tower and ivy clad facade. A granite staircase leads from the front door to four floors that offer spacious living areas, including a long ballroom measuring 95 square metres, a dining room with an impressive open fireplace and a cosy living room with bookcases reaching to the ceiling. A compact kitchen adjoins a good-sized dining room perfect for family meals or smaller groups. On the lower level another generous kitchen opens onto the rear garden with views of the river and surrounding forests. There are five bedrooms, one boasting its own sauna, four bathrooms, a library or study and an office. This stunning property has plenty of space but could easily be divided up depending upon the future owners needs.

An independent house sits around 300m from the main complex and has two bedrooms, two generous living spaces, a private terrace, two bathrooms and a kitchen. This secluded spot would be perfect to use as a gîte without disturbing the main house or for staff accommodation with privacy and its own garden.

A second house that sits across the lawn from the chateau offers an open living area with a mezzanine that could serve as a bedroom, a second bedroom, bathroom and its own kitchen. A sunny stone terrace to the front of the...

LOCAL TAXES

Taxe habitation: EUR

NOTES