

5 bedroom property

EXCLUSIVE

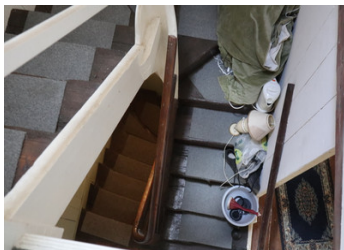
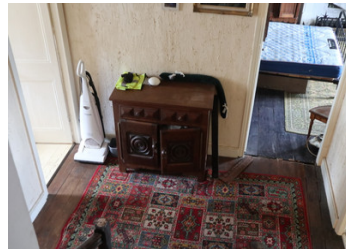


INFORMATION

Town:	Brasparts
Department:	Finistère
Bed:	5
Bath:	1
Floor:	120 m2
Plot Size:	388 m2

IN BRIEF

A very interesting 5 bedroom property located in the centre of a village in Brittany. The property needs work and renovation but has open fireplaces throughout, charm and huge potential. It comes with a private courtyard and outbuildings, possible gites if desired, at the rear.

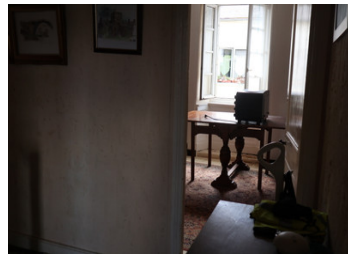


ENERGY - DPE

DPE not required.

NB. Quoted prices relate to euro transactions. Fluctuations in exchange rates are not the responsibility of the agency or those representing it. The agency and its representatives are not authorised to make or give guarantees relating to the property. These particulars do not form part of any contract but are to be taken as a general representation of the property. Any areas, measurements or distances are approximate. Text, photographs and plans, where applicable, are for guidance only. Leggett and its representatives have not tested services, equipment or facilities and cannot guarantee the same.

Particulars for off-plan purchases are intended as a guide only. Final finishes to the property may vary. Purchasers are advised to engage a solicitor to check the plans and specifications as laid out in their purchase contract with the developer.



DESCRIPTION

Entering the property from the main street you will find yourself in a long hallway of:-

5m x 4m

Immediately off to the right you will find one of 2 sitting rooms of:-

4.3m x 4.5m

off to the left the second sitting room of:-

4.3m x 4.4m

Continue you down the hallway and you will find to the right the kitchen of:-

3.3m x 4.5m

there is also a utility room connected to the kitchen of :-

4.3m x 4.8m

and to the left the dining room of:-

3.8m x 4.3m

Remaining on the ground floor, from here there is access to a large courtyard and outbuildings which includes a side entrance to the village via high gates.

On the first floor there are 5 bedrooms of:-

3.3m x 4.4m

3.8m x 4.9m

4.3m x 4.8m

4.3m x 4.6m

3.8m x 3.3m

plus a bathroom of:-

1.89m x 2.59m

LOCAL TAXES

Taxe habitation:

EUR

NOTES